

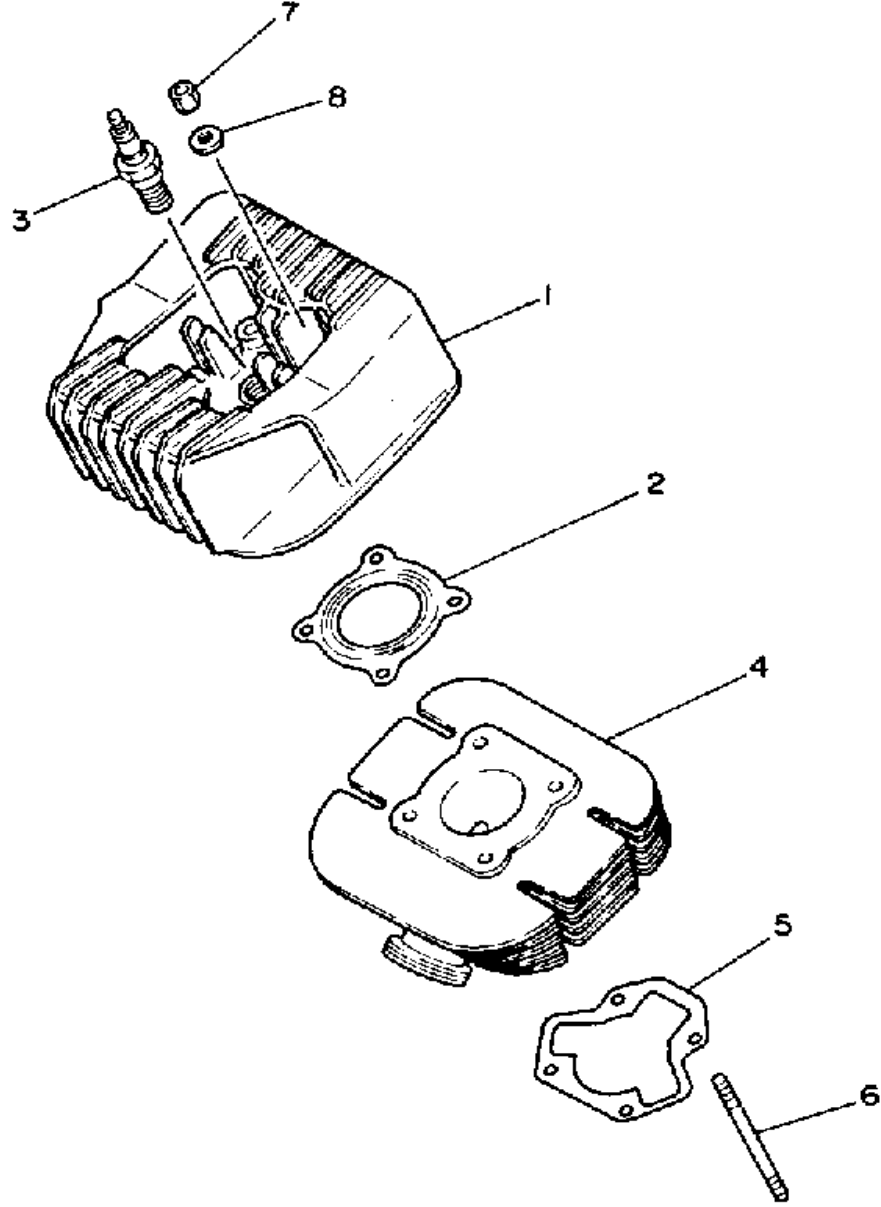
YAMAHA

GENUINE

PARTS CATALOGUE

MOTORCYCLE

CYLINDER

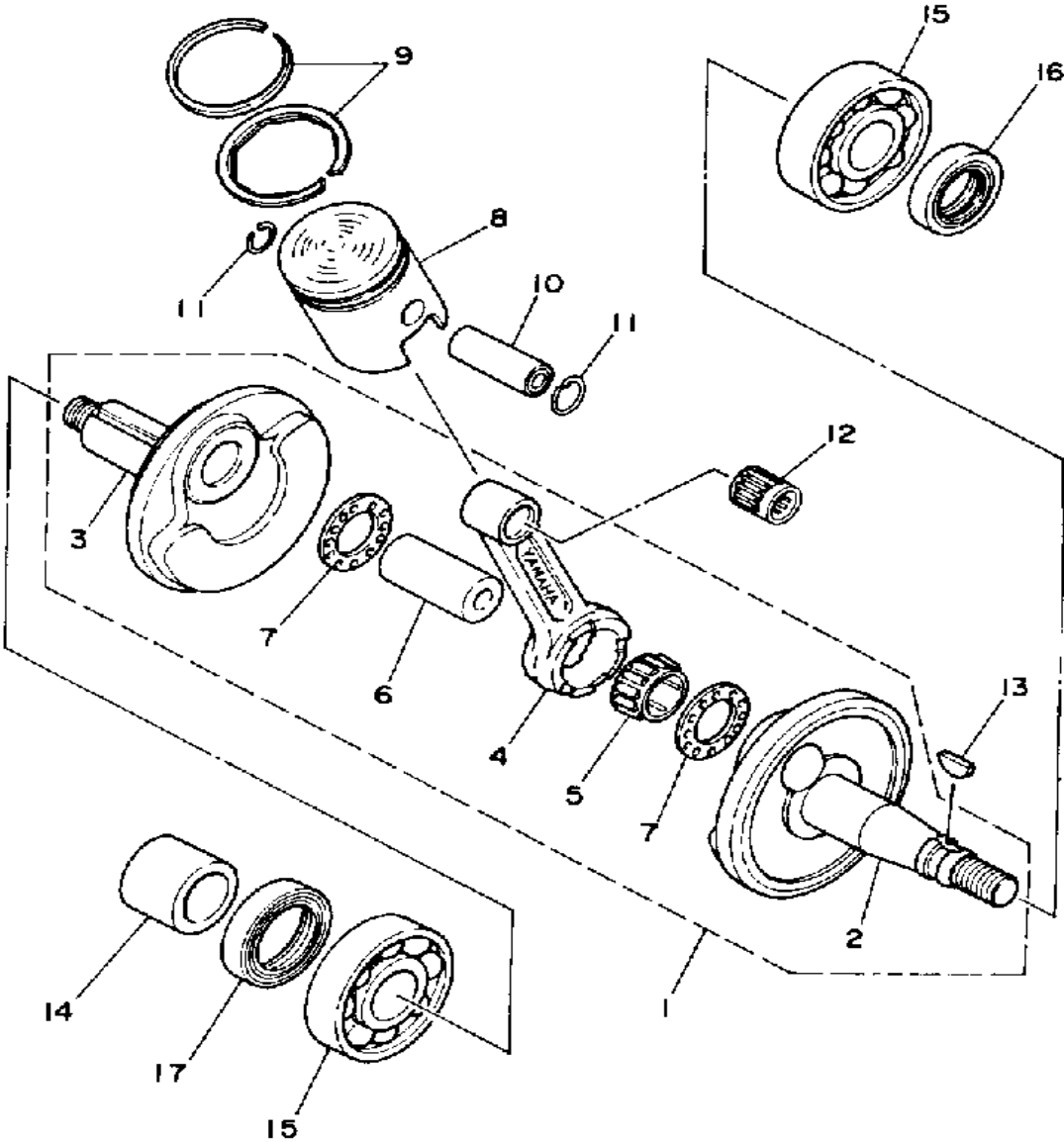


Ref. No.	Part Number	Description	Qty	Remarks
1	23H-11111-00-00	HEAD, CYLINDER 1	1	
2	5G6-11181-00-00	GASKET, CYLINDER HEAD 1	1	
3	NGK-B8HS0-00-00	PLUG, SPARK	1	
4	4U5-11311-00-00	CYLINDER 1	1	
5	3FD-11351-00-00	GASKET, CYLINDER	1	
6	90116-06312-00	BOLT, STUD	4	
7	95380-06600-00	NUT	4	
8	92990-06200-00	WASHER	4	



2RR110-7010

CRANKSHAFT - PISTON

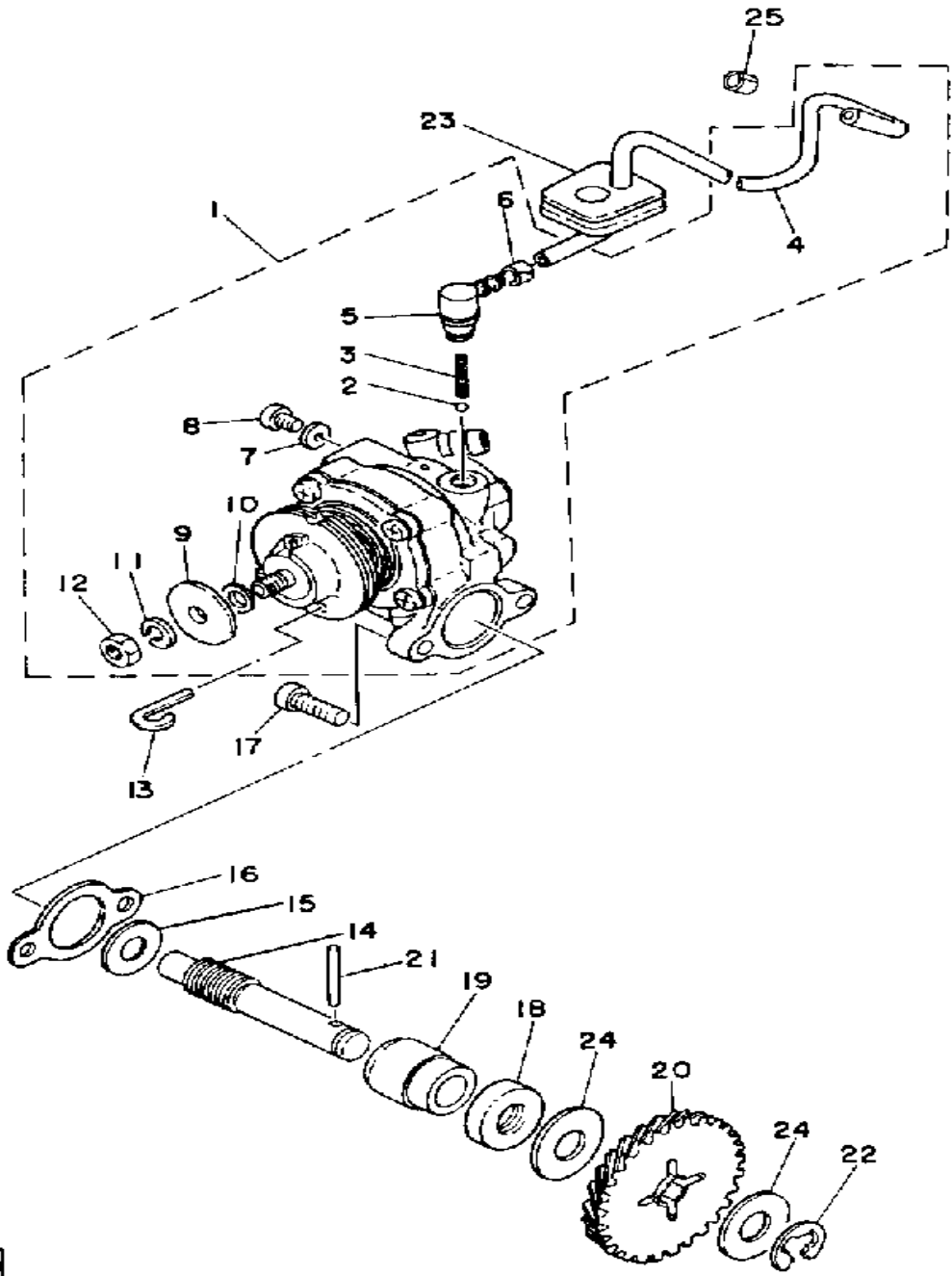


Ref. No.	Part Number	Description	Qty	Remarks
1	2RR-11400-01-00	CRANKSHAFT ASSEMBLY	1	
2	2RR-11412-01-00	. CRANK 1	1	
3	2RR-11422-00-00	. CRANK 2	1	
4	3R1-11651-01-00	. ROD, CONNECTING	1	
5	93310-418C4-00	. BEARING CYLINDER # 0	1	
6	257-11681-00-00	. PIN, CRANK 1	1	
7	90209-18112-00	. WASHER, SPEC'L SHAP	2	
8	3T2-11631-01-97	PISTONSTD (3T2-11631-00-97)	1	
	3T2-11635-01-00	PISTON 1 O/S 0.25 (3T2-11635-00)	1	AP
	3T2-11636-01-00	PISTON 2 O/S 0.50 (3T2-11636-00)	1	AP
9	2W1-11610-00-00	PISTON RINGSET STD	1	
	2W1-11610-10-00	PISTON RINGSET 1ST	1	AP
	2W1-11610-20-00	PISTON RINGSET 2ND	1	AP
10	517-11633-00-00	PIN, PISTON	1	
11	93450-13022-00	CIRCLIP	2	
12	93310-11268-00	BEARING	1	
13	90280-03017-00	KEY, WOODRUFF	1	
14	90387-205E9-00	COLLAR	1	
15	93306-20458-00	BEARING	2	
16	93102-20009-00	OIL SEAL	1	
17	93103-28011-00	OIL SEAL	1	



2RR110-7020

OIL PUMP

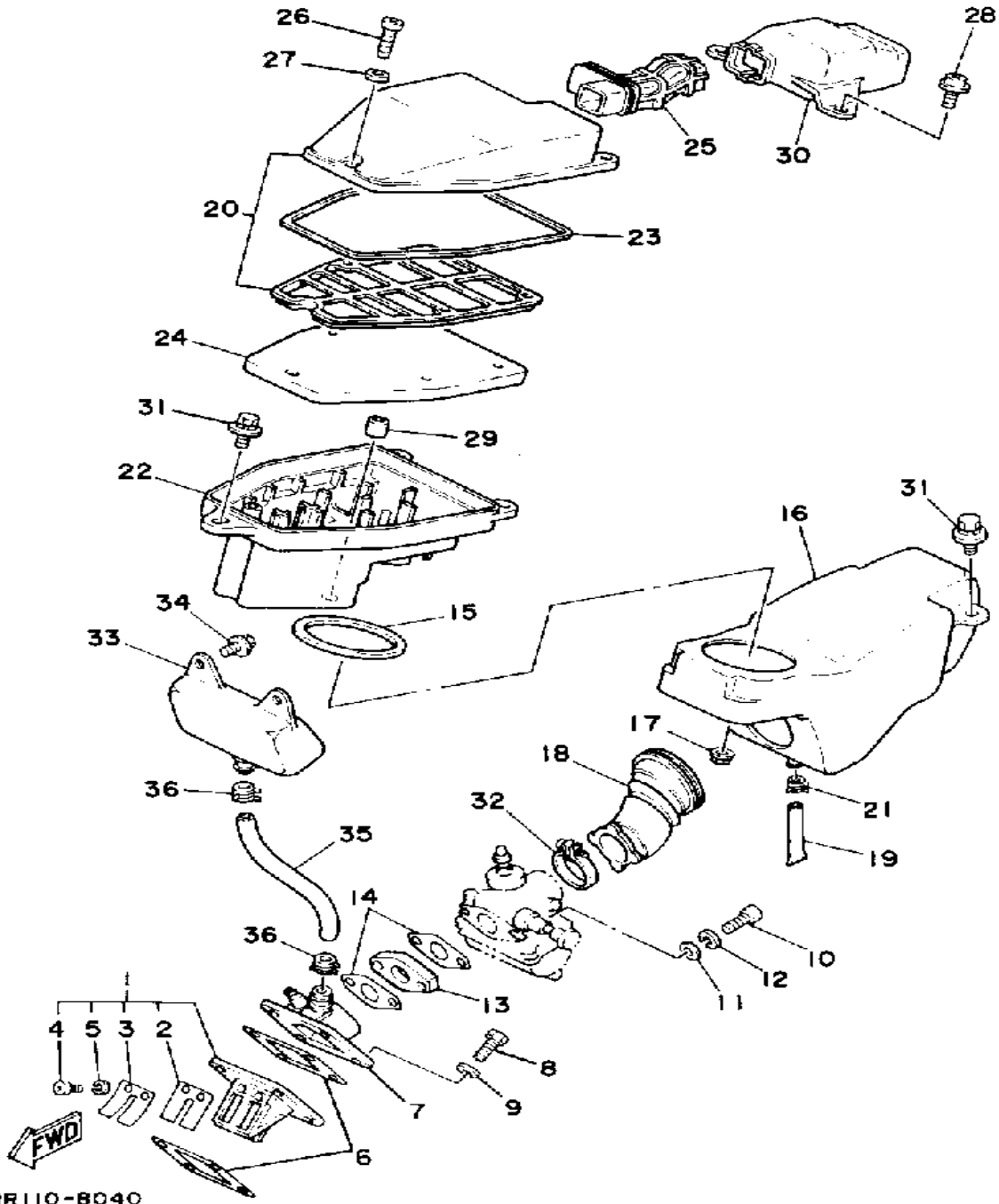


Ref. No.	Part Number	Description	Qty	Remarks
1	2AL-13101-00-00	OIL PUMP ASSEMBLY	1	
2	93505-32002-00	. BALL	1	
3	90501-02217-00	. SPRING, COMPRESSION	1	
4	90445-05564-00	. HOSE	1	
5	353-13552-01-00	. NOZZLE	1	
6	90468-02033-00	. CLIP	1	
7	90430-04004-00	. GASKET	1	
8	98901-04008-00	. SCREW, BIND	1	
9	137-13138-01-00	. PLATE, ADJUSTING	1	
10	137-13137-00-10	. SHIM (1.0T)	1	
11	92990-05100-00	. WASHER, SPRING	1	
12	95380-05600-00	. NUT	1	
13	367-13146-01-00	CLIP	1	
14	2A3-13175-00-00	SHAFT, WORM	1	
15	90201-08624-00	WASHER, PLATE	1	
16	3MT-13116-00-00	GASKET, PUMP CASE (8Y0-13116-00)	1	
17	98580-05014-00	SCREW, PAN HEAD	2	
18	93101-10090-00	OIL SEAL	1	
19	1E7-13176-00-00	METAL, WRM SHAF OTR	1	
20	353-13178-00-00	GEAR, PUMP DRIVE	1	
21	93603-22028-00	PIN, DOWEL	1	
22	99001-08600-00	CIRCLIP	1	
23	248-13174-00-00	HOLDER, OIL PIPE	1	
24	90201-105J4-00	WASHER, PLATE (90201-106H1)	2	
25	90468-02033-00	CLIP	1	



26J010-6030

AIR FILTER

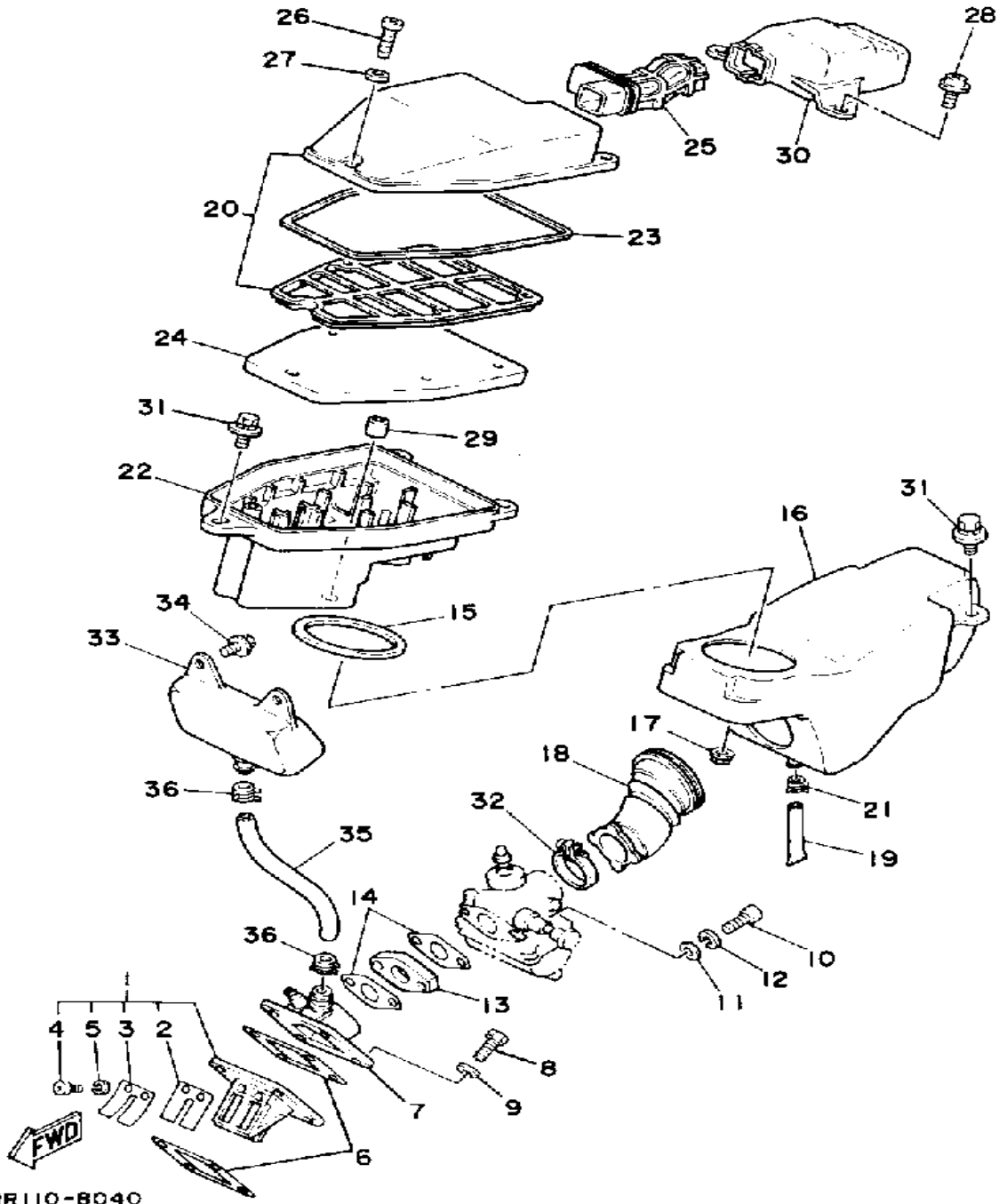


2RR110-8040

Ref. No.	Part Number	Description	Qty	Remarks
1	53V-13610-00-00	REED VALVE ASSEMBLY	1	
2	314-13613-01-00	. REED, VALVE	2	
3	314-13616-01-00	. STOPPER, REED VALVE	2	
4	98580-03008-00	. SCREW, PAN HEAD	4	
5	92990-03100-00	. WASHER, SPRING (92901-03100)	4	
6	87A-13621-00-00	GASKET, VALVE SEAT	2	
7	2AL-13565-00-00	JOINT, CARBURETOR	1	
8	97011-06025-00	BOLT (97001-06025)	4	
9	92901-06600-00	WASHER	4	
10	91316-06025-00	BOLT	2	
11	92990-06200-00	WASHER	2	
12	92995-06100-00	WASHER, SPRING	2	
13	353-13555-00-00	MANIFOLD, INTAKE	1	
14	3FD-13556-00-00	GASKET, MANIFOLD	2	
15	10W-14452-00-00	SEAL	1	
16	2AL-14441-00-00	SILENCER, INTAKE 2	1	
17	90179-06009-00	NUT, SPEC'L SHAPE	1	
18	2AL-14453-00-00	JOINT, AIR CLNR 1	1	
19	34X-1443E-00-00	PIPE, DRAIN	1	
20	10W-W1441-00-00	AIR CLEANER CASE	1	
21	90467-11028-00	CLIP	1	
22	10W-14411-00-00	CASE, AIR CLEANER 1	1	
23	3Y0-14452-00-00	SEAL	1	
24	10W-14451-00-00	ELEMENT, AIR CLNR	1	
25	30W-14437-00-00	DUCT	1	
26	98511-06025-00	SCREW PAN HEAD (92501-06025)	1	
27	92901-06600-00	WASHER	1	

CONTINUED ON NEXT FRAME ►

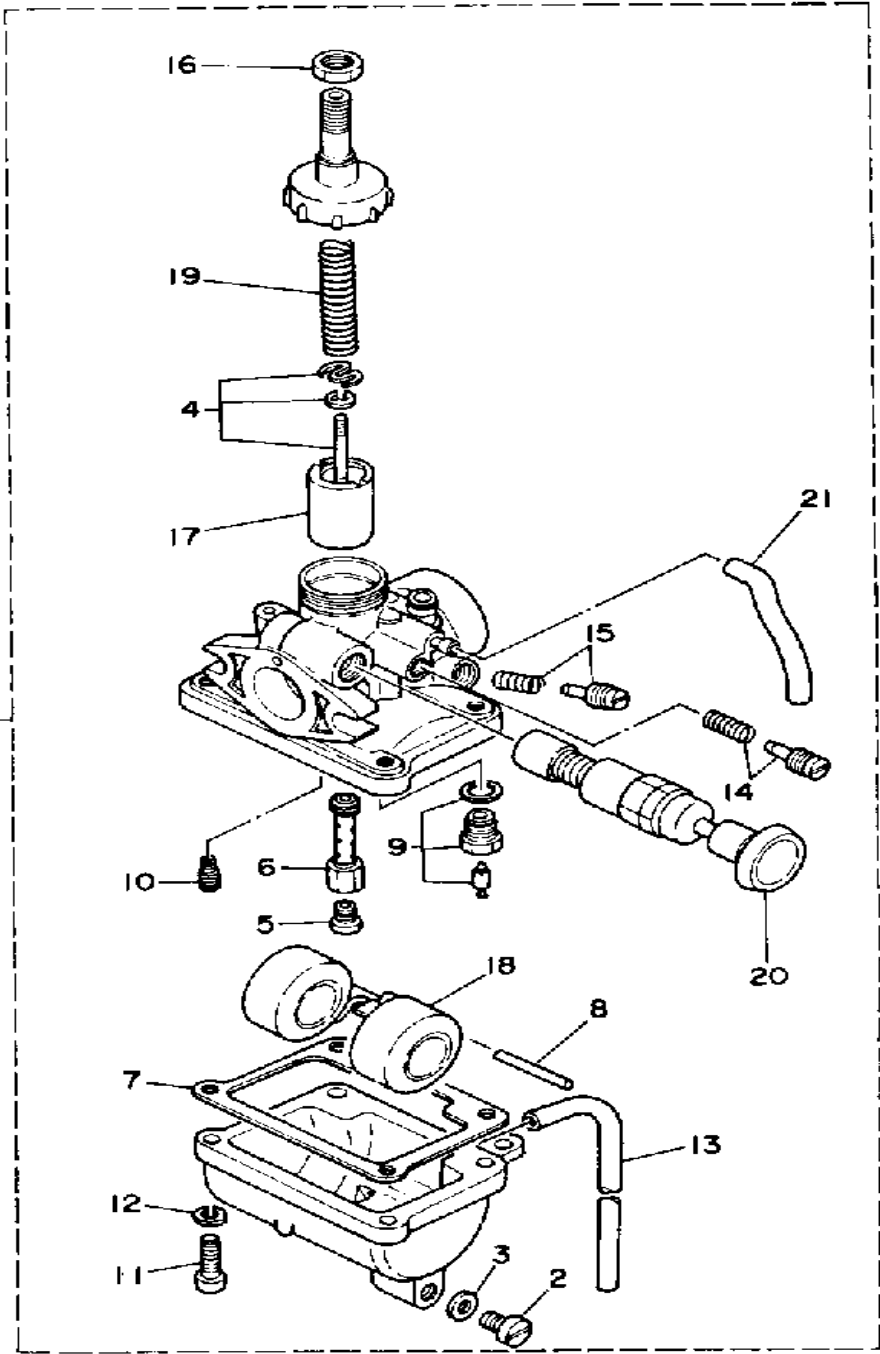
AIR FILTER



2RR110-8040

Ref. No.	Part Number	Description	Qty	Remarks
28	90159-06014-00	SCREW, WITH WASHER	2	
29	10W-14476-00-00	SEAL	1	
30	2AL-14417-00-00	COVER 1	1	
31	90119-06056-00	BOLT, WITH WASHER	3	
32	90460-33087-00	CLAMP, HOSE	1	
33	2AL-13581-00-00	CHAMBER, AIR	1	
34	90119-06056-00	BOLT, WITH WASHER	2	
35	2AL-14465-00-00	PIPE	1	
36	90467-19051-00	CLIP	2	

CARBURETOR



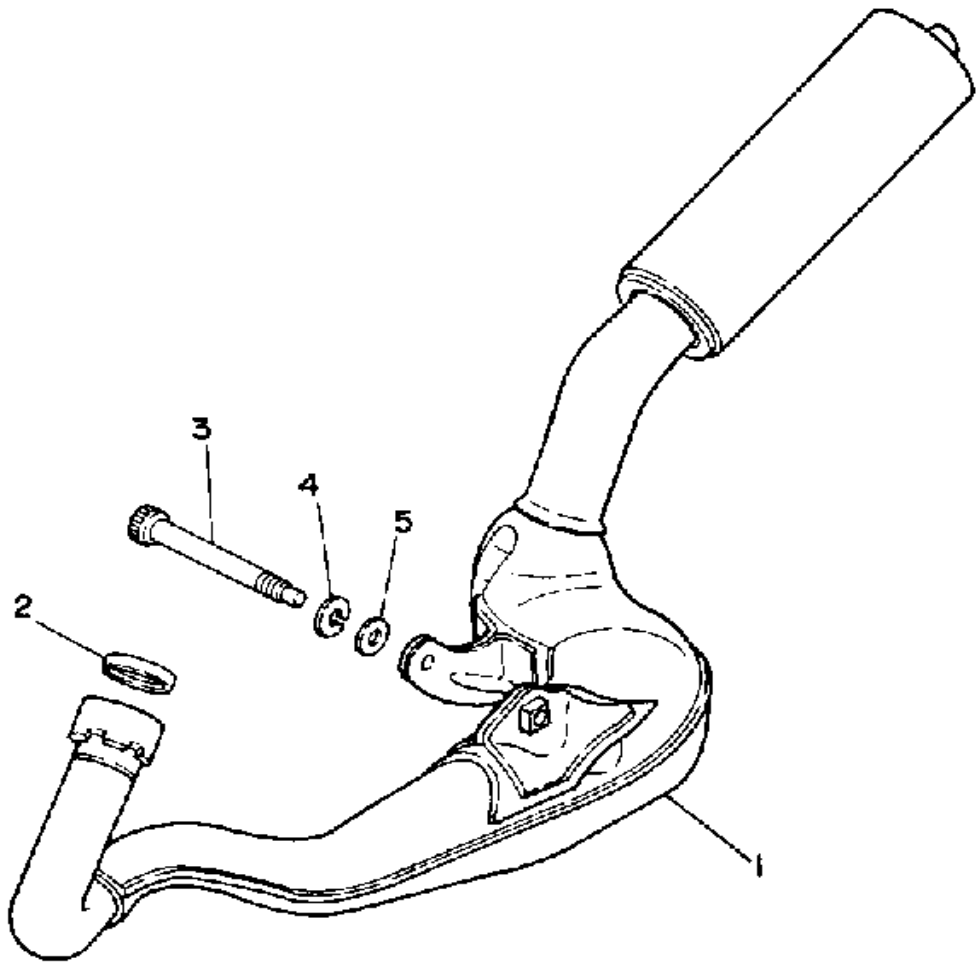
Ref. No.	Part Number	Description	Qty	Remarks
1	2AL-14101-01-00	CARBURETOR ASSEMBLY 1	1	
2	266-14191-00-00	. PLUG, DRAIN	1	
3	266-14126-00-00	. GASKET	1	
4	2AL-1490J-00-00	. NEEDLE SET	1	
5	127-14143-24-00	. JET, MAIN (#120)	1	
6	127-14141-10-00	. NOZZLE, MAIN	1	
7	353-14184-00-00	. GASKET, FLOAT CHMBR	1	
8	353-14186-00-00	. PIN, FLOAT	1	
9	31J-14107-00-00	. NEEDLE VALVE SET	1	
10	260-14142-17-00	. JET, PILOT (#17.5)	1	
11	98503-04014-00	. SCREW, PAN HEAD	4	
12	92901-04100-00	. WASHER, SPRING	4	
13	90445-05319-00	. HOSE	1	
14	12G-14103-00-00	. THROTTLE SCREW SET	1	
15	12G-14104-00-00	. AIR SCREW SET	1	
16	802-14169-00-00	. CAP	1	
17	353-14112-20-00	. VALVE, THROTTLE 1	1	
18	3T2-14185-00-00	. FLOAT	1	
19	353-14131-00-00	. SPRING, THRTL VALVE	1	
20	2GX-14171-00-00	. PLUNGER, STARTER	1	
21	183-14197-01-00	. PIPE, AIRVENT	1	



2RR110-7050

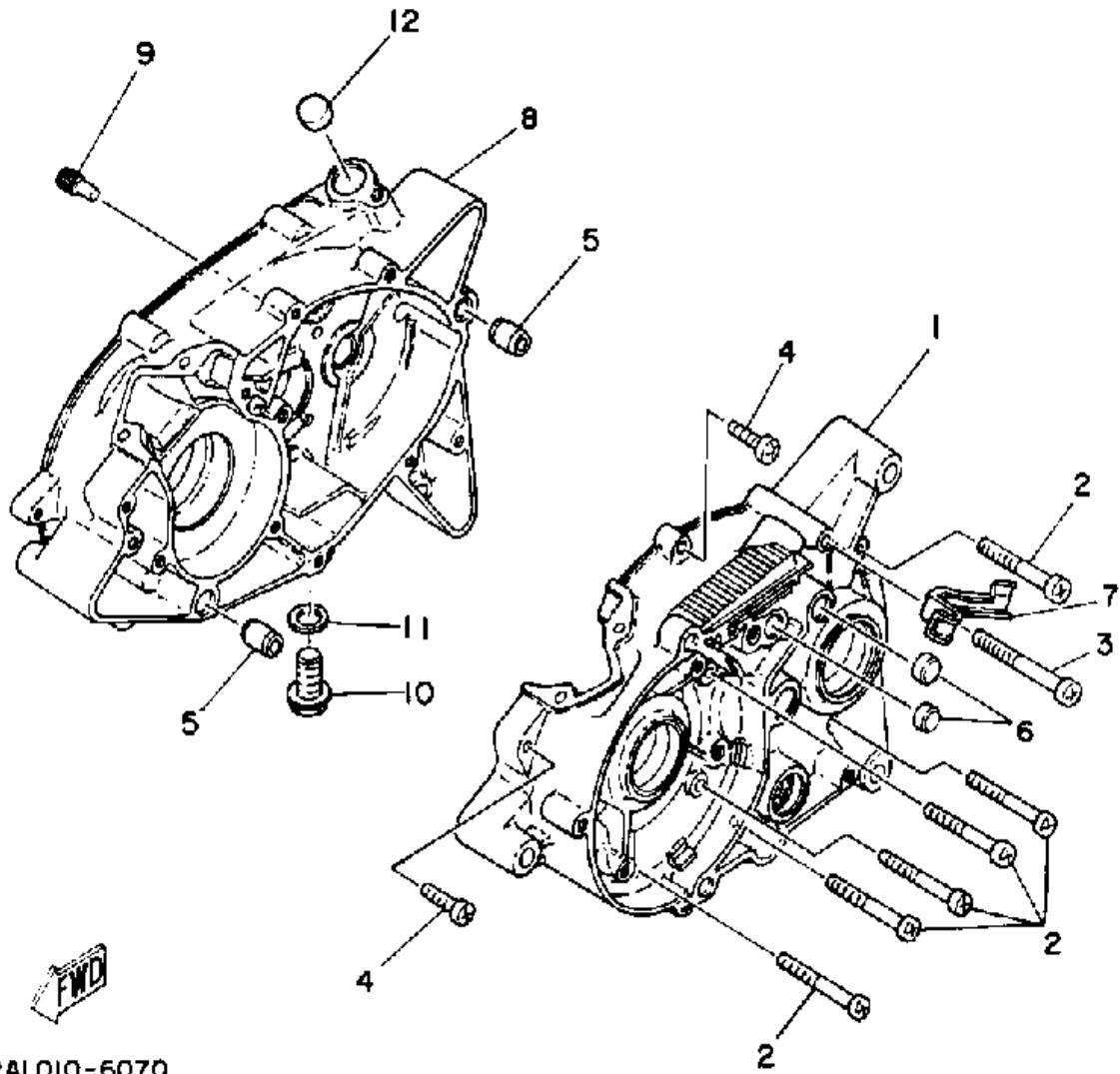
EXHAUST

Ref. No.	Part Number	Description	Qty	Remarks
1	2RR-14711-01-00	MUFFLER L	1	
2	3MT-14613-00-00	GASKET, EXST PIPE	1	
3	90110-08139-00	BOLT, HEX SKT HEADHEXAGON SOCKET HEAD	1	
4	92990-08100-00	WASHER	1	
5	92901-08600-00	WASHER	1	



2RR110-7060

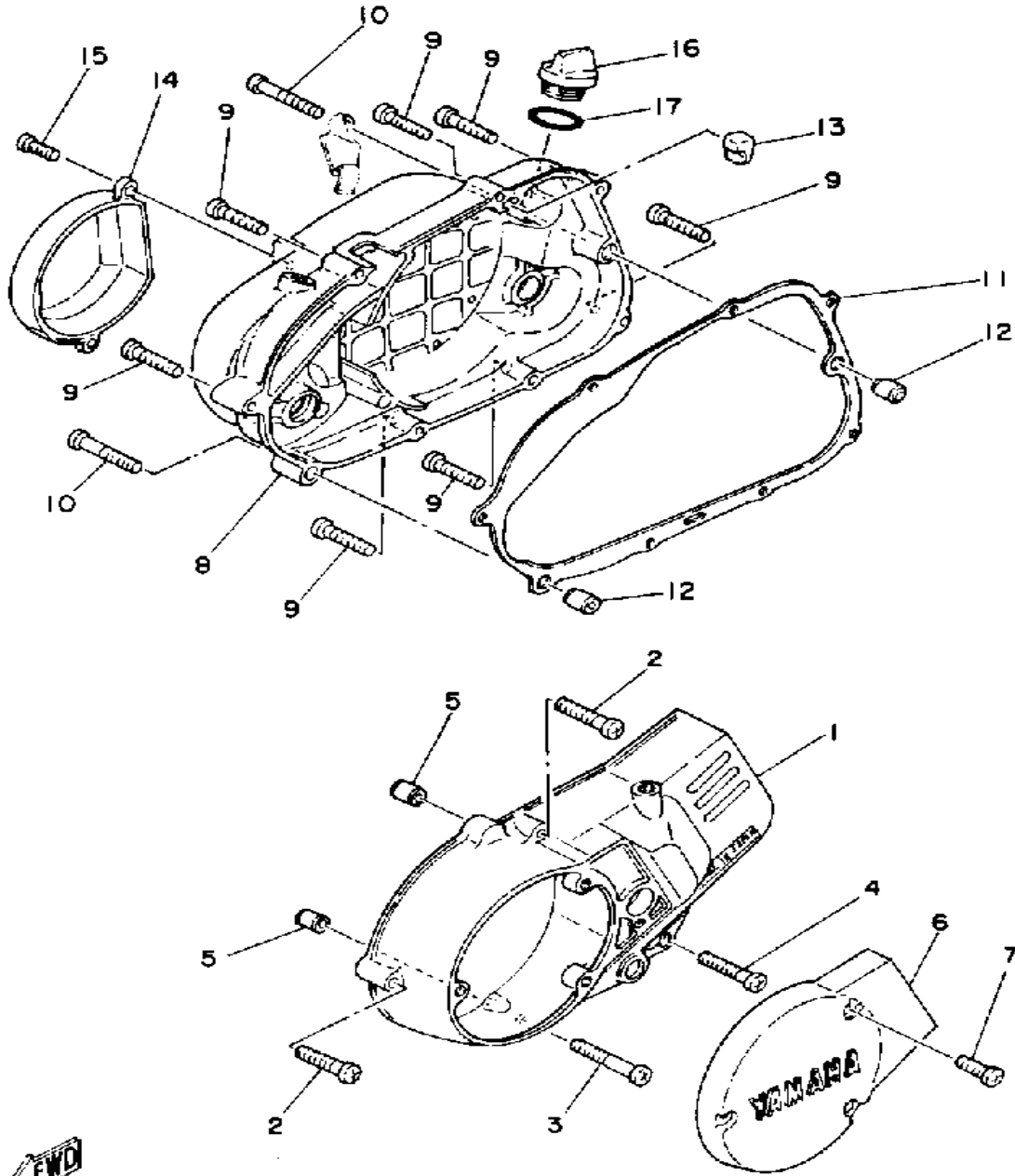
CRANKCASE



2AL010-6070

Ref. No.	Part Number	Description	Qty	Remarks
1	3T2-15111-01-00	CRANKCASE 1	1	
2	98580-06550-00	SCREW PAN HEAD (92503-06050)	8	
3	98580-06055-00	SCREW, pan head (92501-06065-00)	1	
4	98511-06025-00	SCREW PAN HEAD (92501-06025)	2	
5	99510-12016-00	PIN, DOWEL	2	
6	90334-12009-00	PLUG, STRAIGHT	2	
7	3T2-15484-01-00	CLAMP 2	1	
8	3T2-15121-02-00	CRANKCASE 2	1	
9	492-15387-00-00	STOPPER	1	
10	90340-12005-00	PLUG, DRAIN	1	
11	90430-12213-00	GASKET	1	
12	90338-16015-00	PLUG, BLIND (168-17481-00) ..	1	

CRANKCASE COVER 1

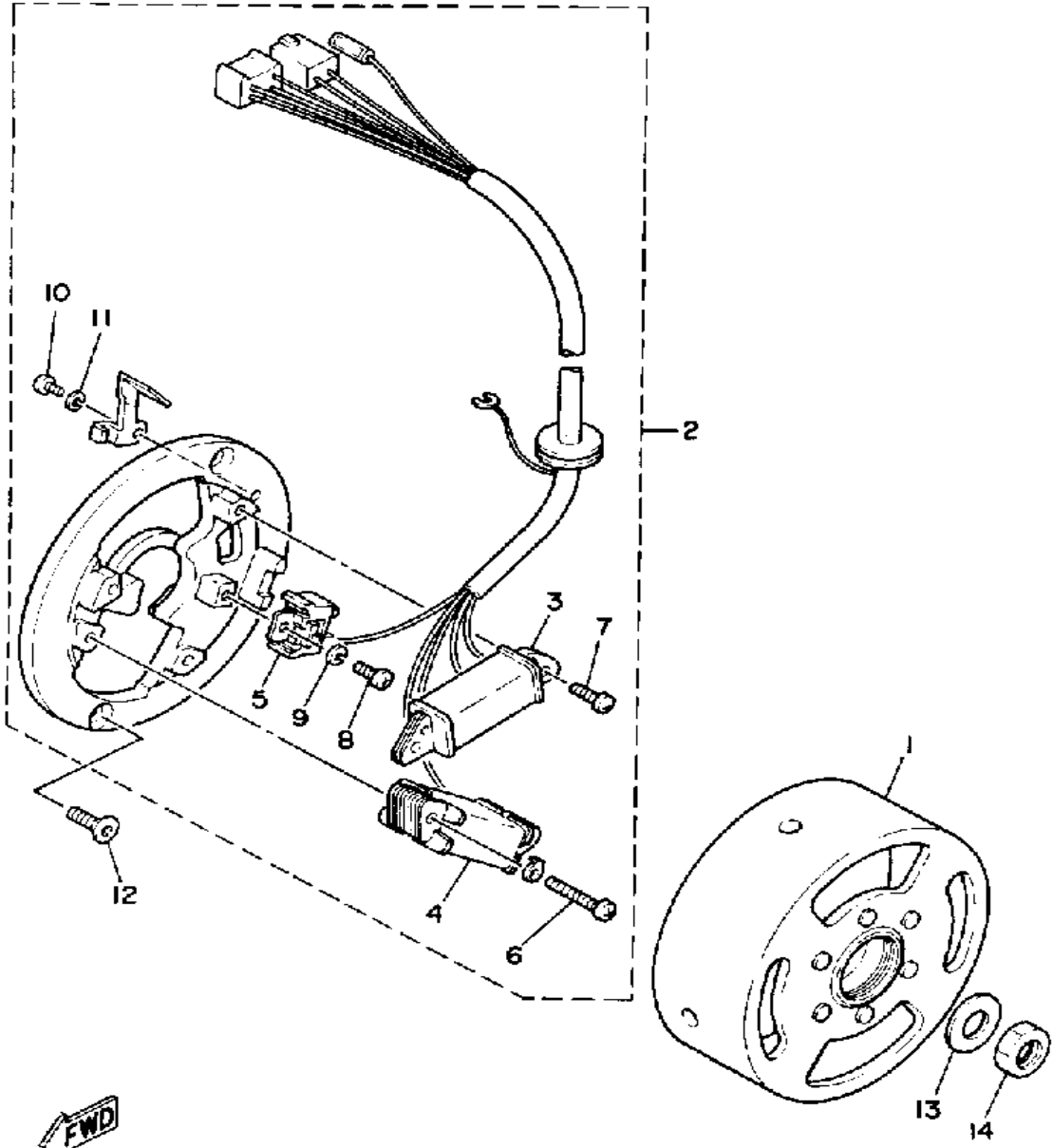


Ref. No.	Part Number	Description	Qty	Remarks
1	3M7-15411-00-00	COVER, CRANKCASE L	1	
2	98580-06030-00	SCREW PAN HEAD	2	
3	98580-06040-00	SCREW, pan head (92501-06040-00)	1	
4	98580-06545-00	SCREW PAN HEAD (92503-06045)	1	
5	99530-10014-00	PIN, DOWEL	2	
6	3M7-15415-00-00	COVER, GENERATOR	1	
7	98580-06020-00	SCREW	3	
8	3M7-15421-00-00	COVER, CRANKCASE R	1	
9	98580-06030-00	SCREW PAN HEAD	7	
10	98580-06040-00	SCREW, pan head (92501-06040-00)	2	
11	3MT-15451-00-00	GASKET, CRCS COVER (353-15451-00)	1	
12	99530-10014-00	PIN, DOWEL	2	
13	353-15437-02-00	SCRAPER, OIL	1	
14	3M7-15416-00-00	COVER, OIL PUMP	1	
15	98502-06016-00	SCREW, PAN HEAD (98501-06014-00)	2	
16	1RG-15363-00-00	PLUG, OIL	1	
17	93210-21190-00	O-RING	1	



2GJ010-6080

GENERATOR



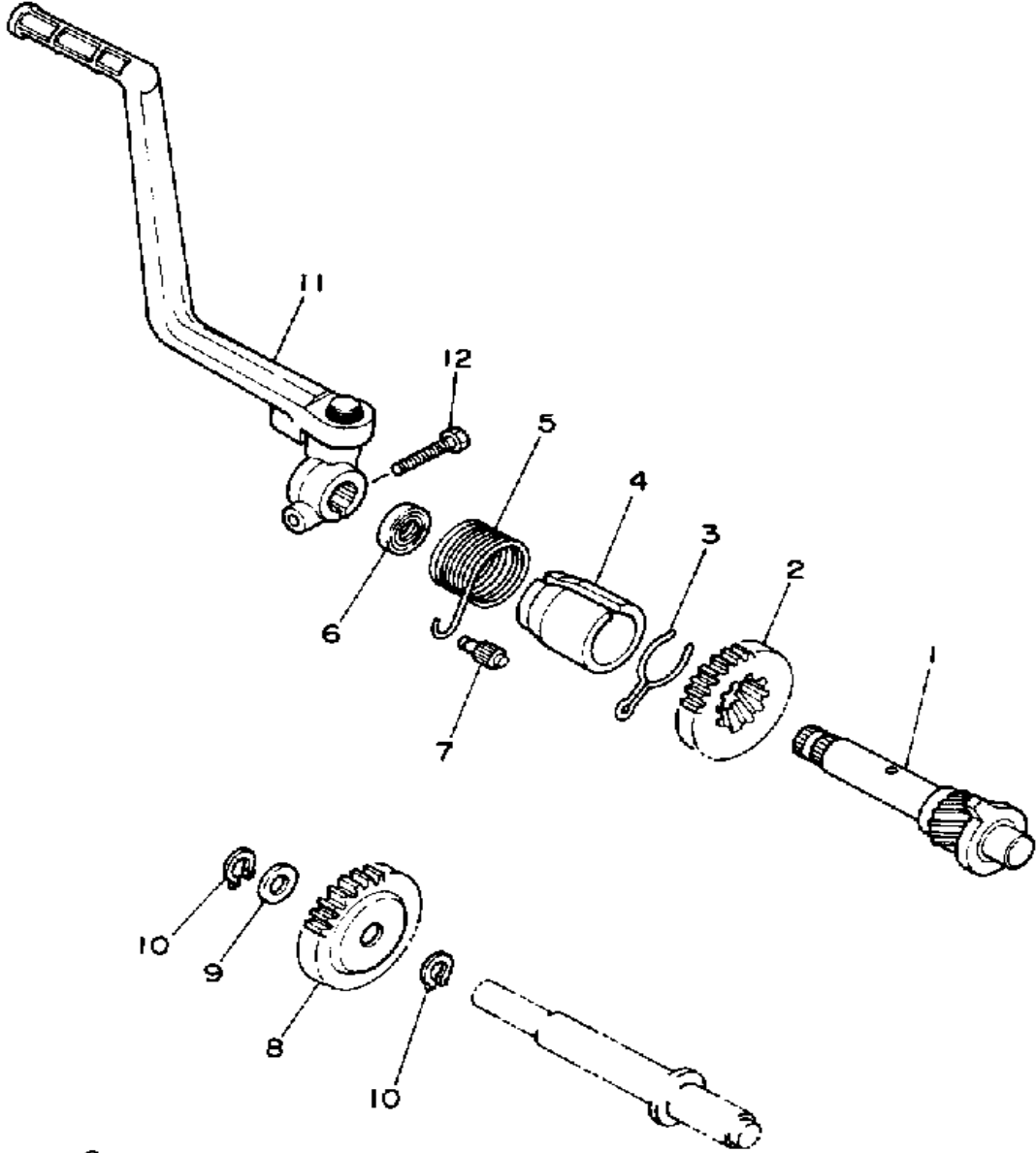
Ref. No.	Part Number	Description	Qty	Remarks
1	2AL-85550-M2-00	ROTOR ASSEMBLY	1	
2	3AX-85560-00-00	BASE ASSEMBLY	1	
3	4Y4-85520-M0-00	. COIL, CHARGE	1	
4	3AX-81313-00-00	. COIL, LIGHTING 1	1	
5	2AL-85580-M0-00	. COIL, PULSER	1	
6	98511-04025-00	. SCREW, PAN HEAD	2	
7	98511-04012-00	. SCREW, PAN HEAD	2	
8	98580-04010-00	. SCREW, PAN HEAD	1	
9	92901-04100-00	. WASHER, SPRING	1	
10	98511-04006-00	. SCREW, PAN HEAD (98501-04005)	1	
11	92901-04100-00	. WASHER, SPRING	1	
12	90149-05237-00	SCREW, SPEC'L SHAPE	2	
13	90201-123L6-00	WASHER, PLATE	1	
14	90179-12421-00	NUT, SPEC'L SHAPE	1	



2RR110-7310

STARTER

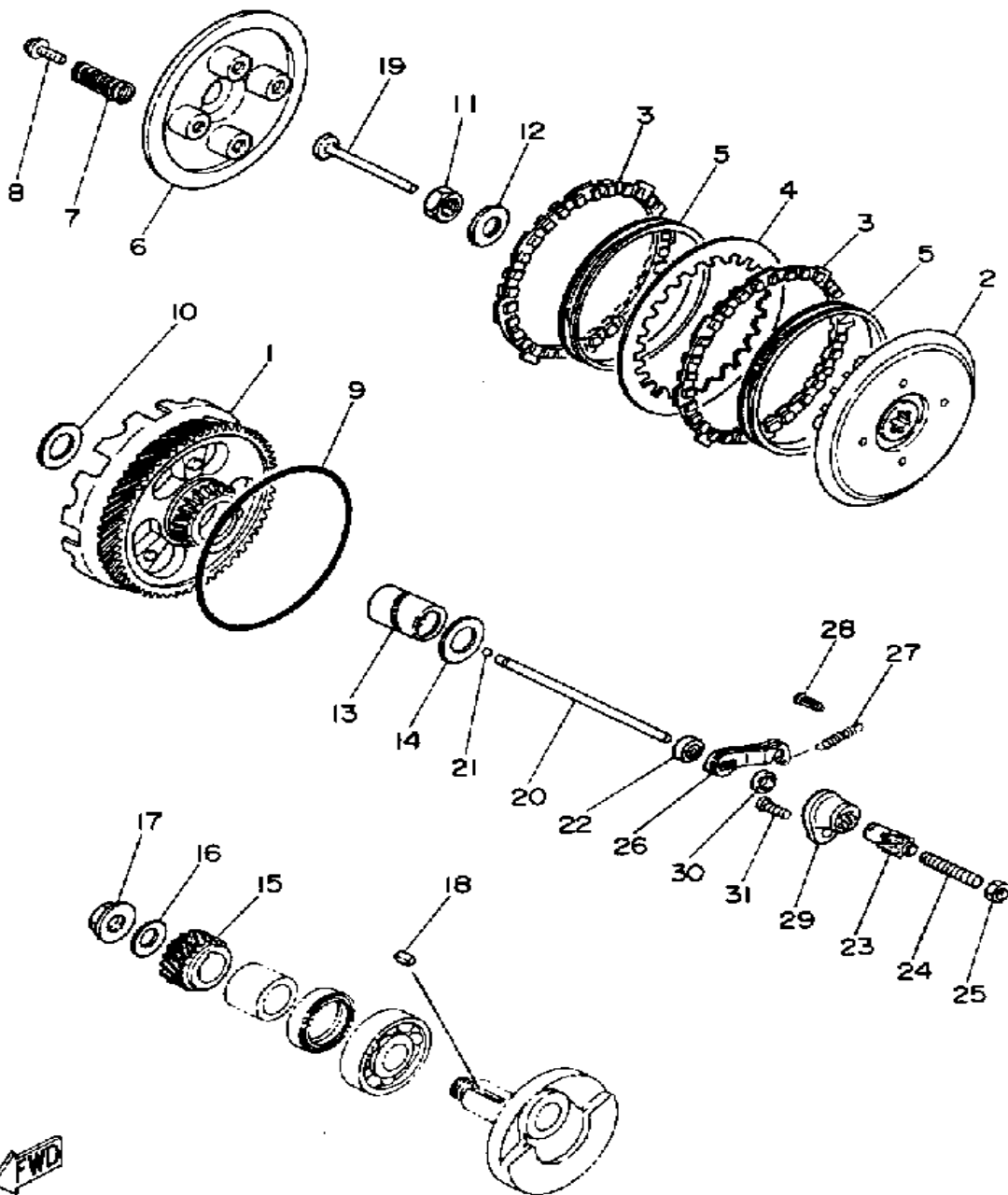
Ref. No.	Part Number	Description	Qty	Remarks
1	2AL-15660-00-00	KICK AXLE ASSEMBLY	1	
2	353-15641-00-00	GEAR, KICK	1	
3	90468-26038-00	CLIP	1	
4	4U1-15664-00-00	GUIDE, SPRING	1	
5	90508-26136-00	SPRING, TORSION	1	
6	93109-15001-00	OIL SEAL	1	
7	248-15668-00-00	STOPPER	1	
8	353-15651-00-00	GEAR, KICK IDLE	1	
9	90201-12166-00	WASHER, PLATE	1	
10	99009-12400-00	CIRCLIP	2	
11	2AL-15620-00-00	KICK CRANK ASSEMBLY	1	
12	97011-06025-00	BOLT (97001-06025)	1	



2AL010-6090

CLUTCH

Ref. No.	Part Number	Description	Qty	Remarks
1	5L3-16150-00-00	PRI. DRVN GR COMP. (19/68T) (2U2-16150-00)	1	
2	257-16371-01-00	BOSS, CLUTCH	1	
3	131-16321-00-00	PLATE, FRICTION	2	
4	131-16324-00-00	PLATE, CLUTCH 1	1	
5	131-16367-00-00	RING, CUSHION	2	
6	257-16351-00-00	PLATE, PRESSURE 1	1	
7	90501-20122-00	SPRING, COMPRESSION (137-16333-00)	4	
8	90119-05001-00	BOLT, WITH WASHER	4	
9	93210-99103-00	O-RING	1	
10	122-16164-00-00	PLATE, THRUST 2	1	
11	90170-12060-00	NUT	1	
12	90208-12015-00	WASHER, CONICAL SPRING	1	
13	90560-17123-00	SPACER	1	
14	122-16164-00-00	PLATE, THRUST 2	1	
15	353-16111-01-00	GEAR, PRI DRIVE	1	
16	90208-12015-00	WASHER, CONICAL SPRING	1	
17	90179-12244-00	NUT, SPEC'L SHAPE	1	
18	90282-05005-00	KEY, STRAIGHT	1	
19	137-16356-00-00	ROD, PUSH 1	1	
20	353-16357-00-00	ROD, PUSH 2	1	
21	93503-16010-00	BALL	1	
22	93102-04382-00	OIL SEAL, SD-TYPE (257-153879-00)	1	
23	241-16341-01-00	SCREW, PUSH	1	
24	90113-06013-00	BOLT, SET	1	
25	95380-06700-00	NUT	1	
26	451-16342-00-00	LEVER, PUSH	1	
27	90506-07066-00	SPRING, TENSION	1	

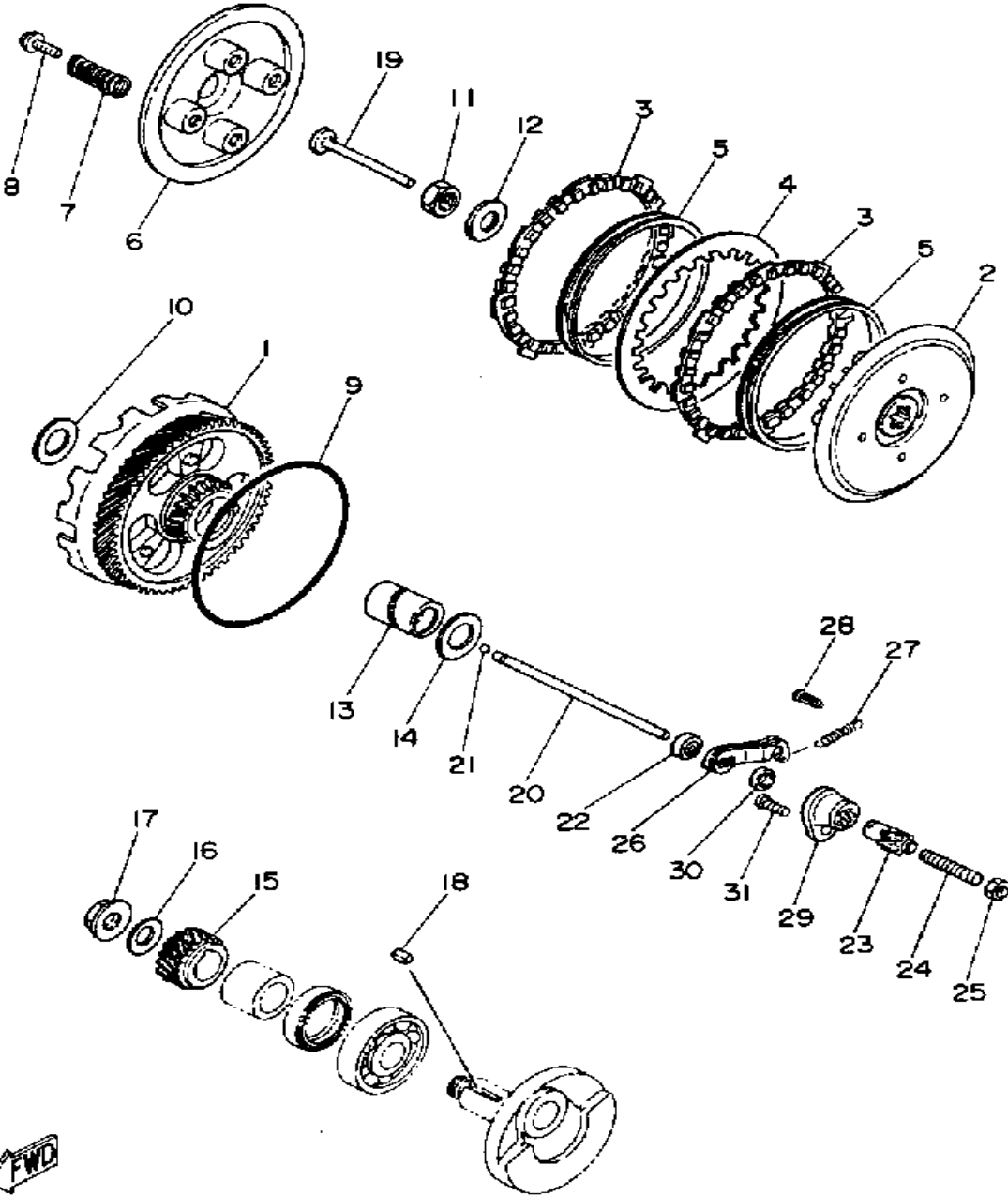


40E110-3110

CONTINUED ON NEXT FRAME ►

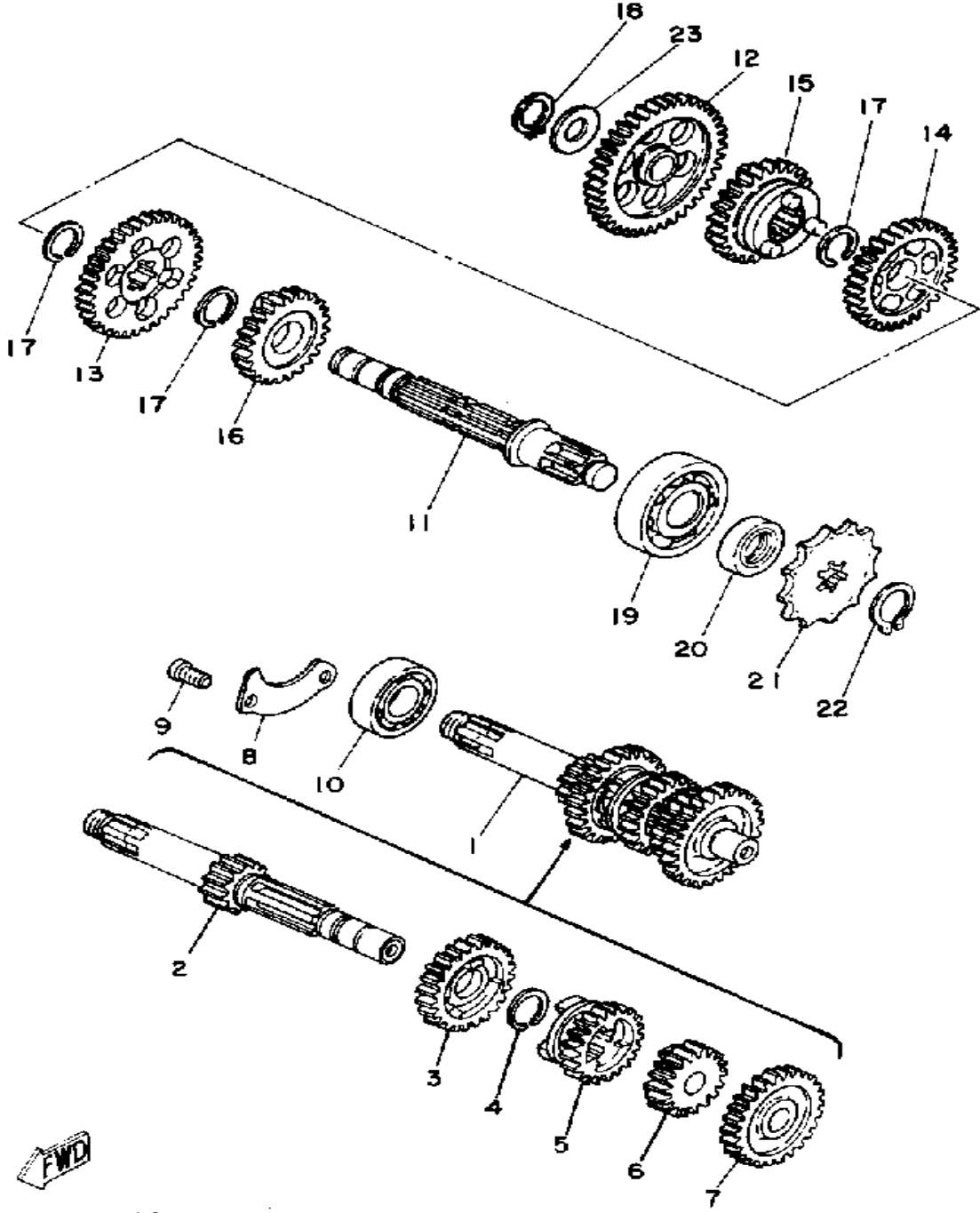
CLUTCH

Ref. No.	Part Number	Description	Qty	Remarks
28	132-16346-00-00	HOOK, SPRING	1	
29	353-16396-00-00	HOUSING, PUSH SCREW	1	
30	93104-10085-00	OIL SEAL, SO-TYPE	1	
31	90150-06032-00	SCREW, ROUND HEAD	1	



40E110-3110

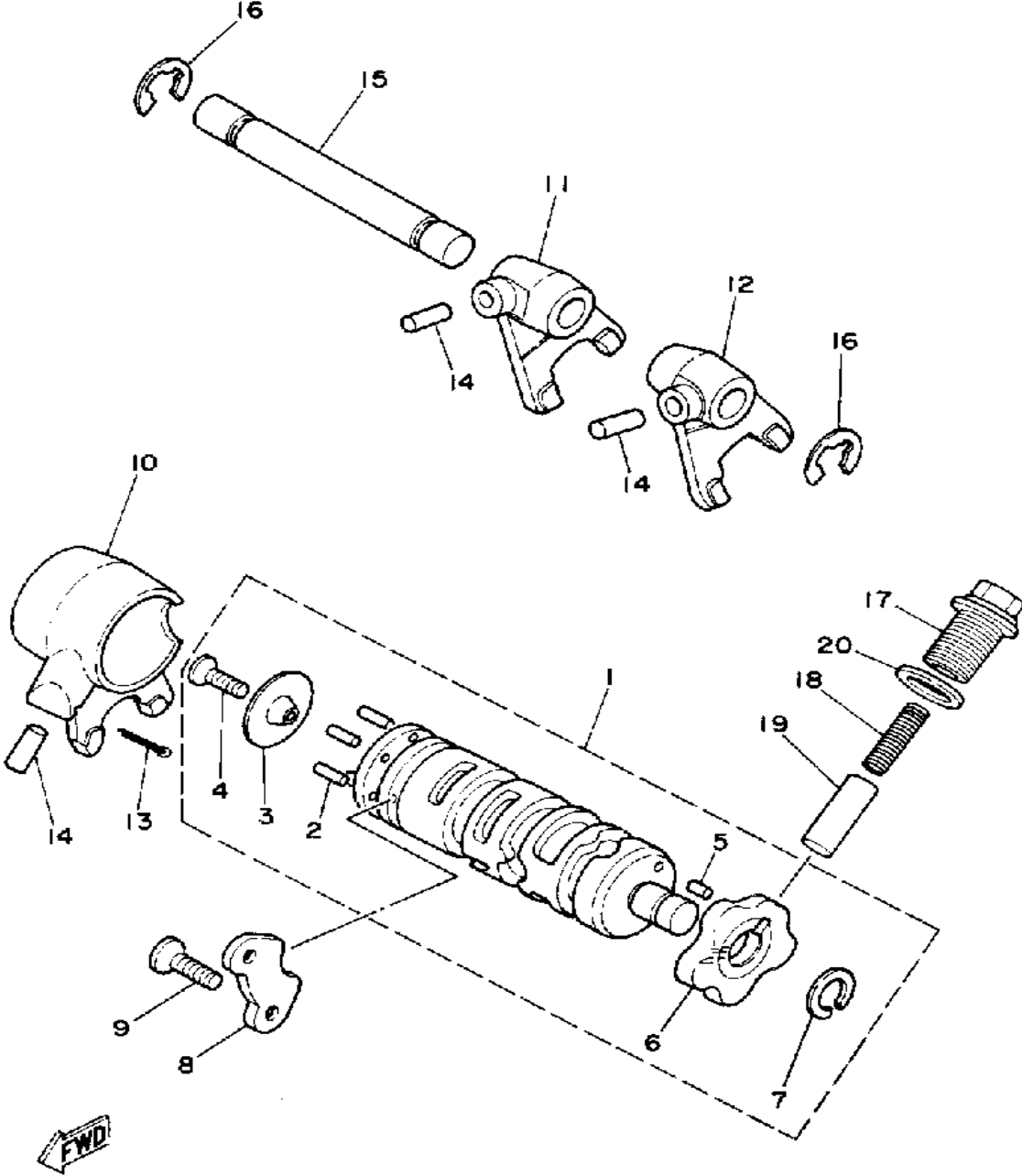
TRANSMISSION



Ref. No.	Part Number	Description	Qty	Remarks
1	353-17410-10-00	MAIN AXLE	1	
2	353-17411-10-00	. AXLE, MAIN	1	
3	353-17141-12-00	. GEAR, 4TH PINION	1	
4	93440-16089-00	. CIRCLIP	1	
5	353-17131-10-00	. GEAR, 3RD PINION	1	
6	353-17121-11-00	. GEAR, 2ND PINION	1	
7	353-17151-00-00	. GEAR, 5TH PINION	1	
8	353-17471-00-00	PLATE, COVER	1	
9	98580-06012-00	SCREW, PAN HEAD	2	
10	93306-20333-00	BEARING	1	
11	4U1-17421-00-00	AXLE, DRIVE	1	
12	353-17211-01-00	GEAR, 1ST WHEEL	1	
13	353-17221-00-00	GEAR, 2ND WHEEL	1	
14	353-17231-00-00	GEAR, 3RD WHEEL	1	
15	3M8-17241-00-00	GEAR, 4TH WHEEL	1	
16	353-17251-00-00	GEAR, 5TH WHEEL	1	
17	93440-16089-00	CIRCLIP	3	
18	99009-13400-00	CIRCLIP (55X)	1	
19	93306-30302-00	BEARING	1	
20	93102-17187-00	OIL SEAL	1	
21	93811-12009-00	SPROCKET, DRIVEN (257-17461-21)	1	
22	99009-16400-00	CIRCLIP	1	
23	257-17219-00-00	SHIM	1	

4U5010-2120

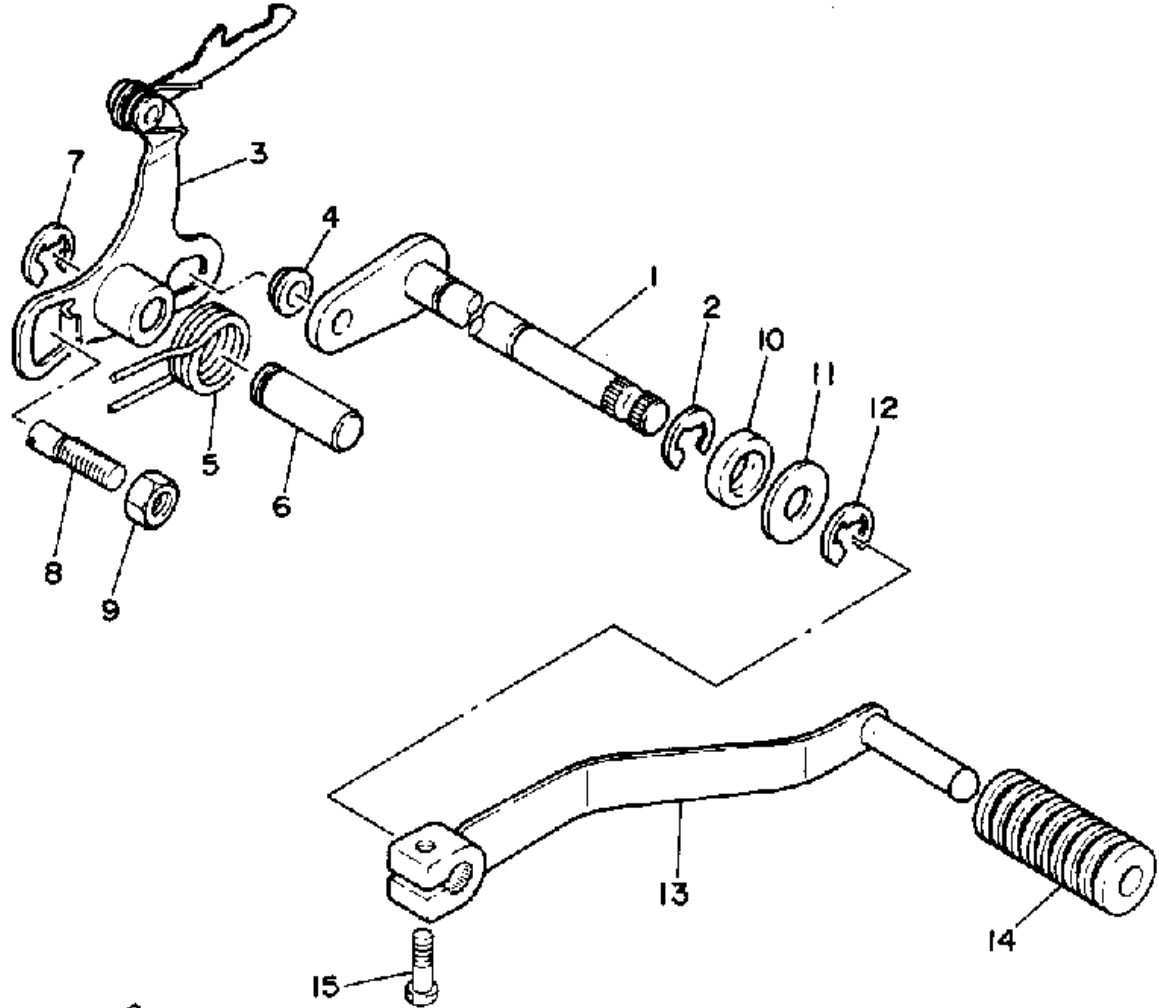
SHIFT CAM - FORK



2AL010-6120

Ref. No.	Part Number	Description	Qty	Remarks
1	2AL-18540-00-00	SHIFT CAM ASSEMBLY	1	
2	93604-10011-00	. PIN, DOWEL	4	
3	214-18561-00-00	. PLATE, SIDE 1	1	
4	98701-05012-00	. SCREW, FLAT HEAD	1	
5	93604-08071-00	. PIN, DOWEL	1	
6	353-18141-01-00	. PLATE, STOPPER	1	
7	93440-12026-00	. CIRCLIP, OUTER	1	
8	353-18562-00-00	PLATE, STOPPER 2	1	
9	98701-06012-00	SCREW, FLAT HEAD (92701-06012)	2	
10	353-18511-01-00	FORK, SHIFT 1	1	
11	3M8-18512-00-00	FORK, SHIFT 2	1	
12	353-18513-01-00	FORK, SHIFT 3	1	
13	91401-25020-00	PIN, COTTER	1	
14	93606-14081-00	PIN, DOWEL	3	
15	214-18531-00-00	BAR, SHIFT FORK GUIDE 1	1	
16	99006-10600-00	CIRCLIP	2	
17	90109-14485-00	BOLT	1	
18	90501-09292-00	SPRING, COMPRESSION	1	
19	353-18547-00-00	STOPPER, CAM	1	
20	137-15353-00-00	GASKET, DRAIN	1	

SHIFT SHAFT

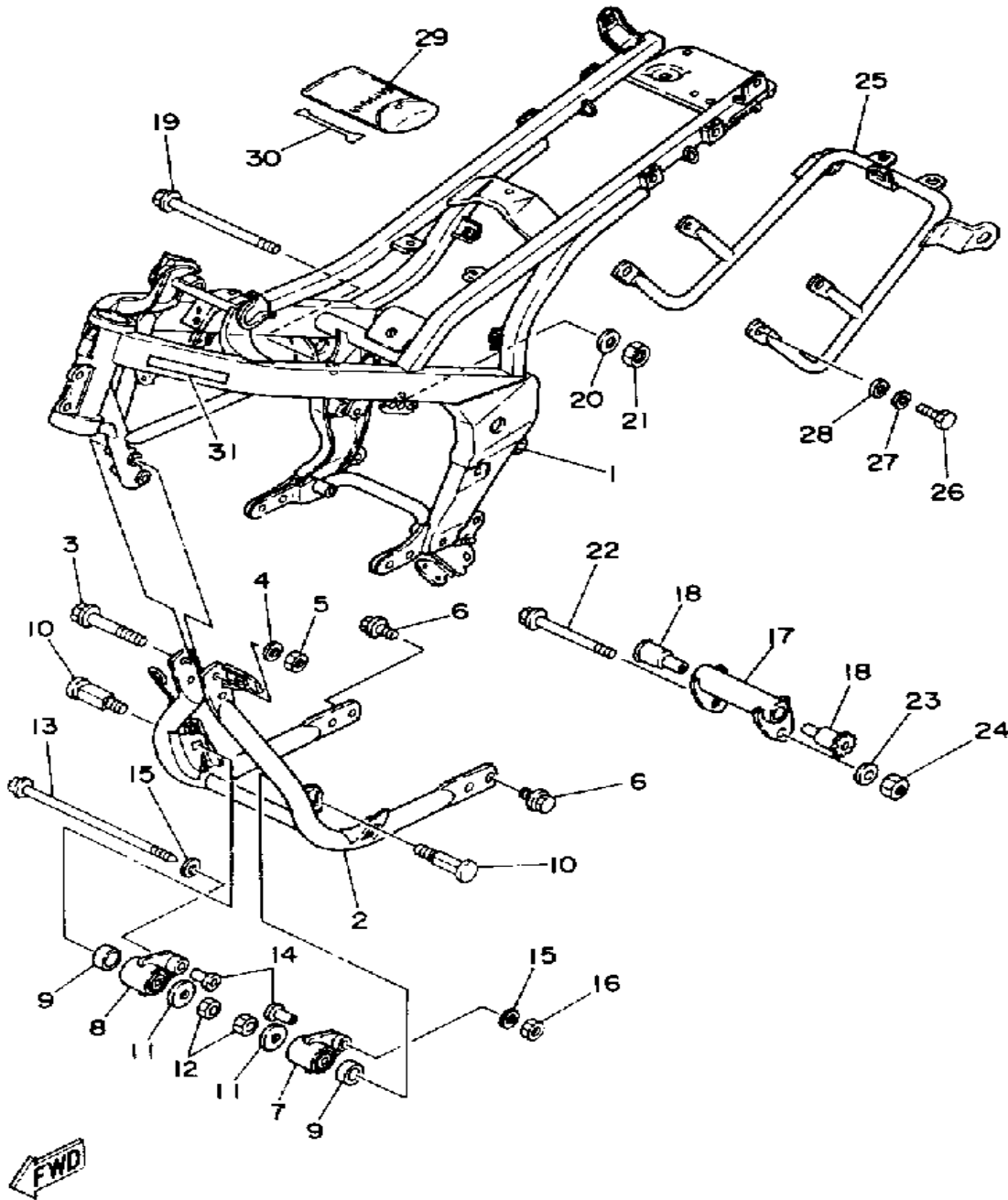


Ref. No.	Part Number	Description	Qty	Remarks
1	2AL-18101-01-00	SHIFT SHAFT ASSEMBLY 1	1	
2	99006-10600-00	CIRCLIP	1	
3	2AL-18120-01-00	SHIFT LEVER ASSEMBLY	1	
4	214-18178-00-00	ROLLER, SHIFT LEVER	1	
5	90508-32054-00	SPRING, TORSION	1	
6	367-18197-00-00	SHAFT	1	
7	99006-10600-00	CIRCLIP	1	
8	90149-08094-00	SCREW	1	
9	95333-08600-00	NUT	1	
10	93102-12321-00	OIL SEAL, SD-TYPE	1	
11	90201-12575-00	WASHER, PLATE	1	
12	99006-10600-00	CIRCLIP	1	
13	2AL-18111-00-00	PEDAL, SHIFT	1	
14	132-18113-01-00	COVER, SHIFT PEDAL	1	
15	97011-06020-00	BOLT	1	



2AL010-6130

FRAME

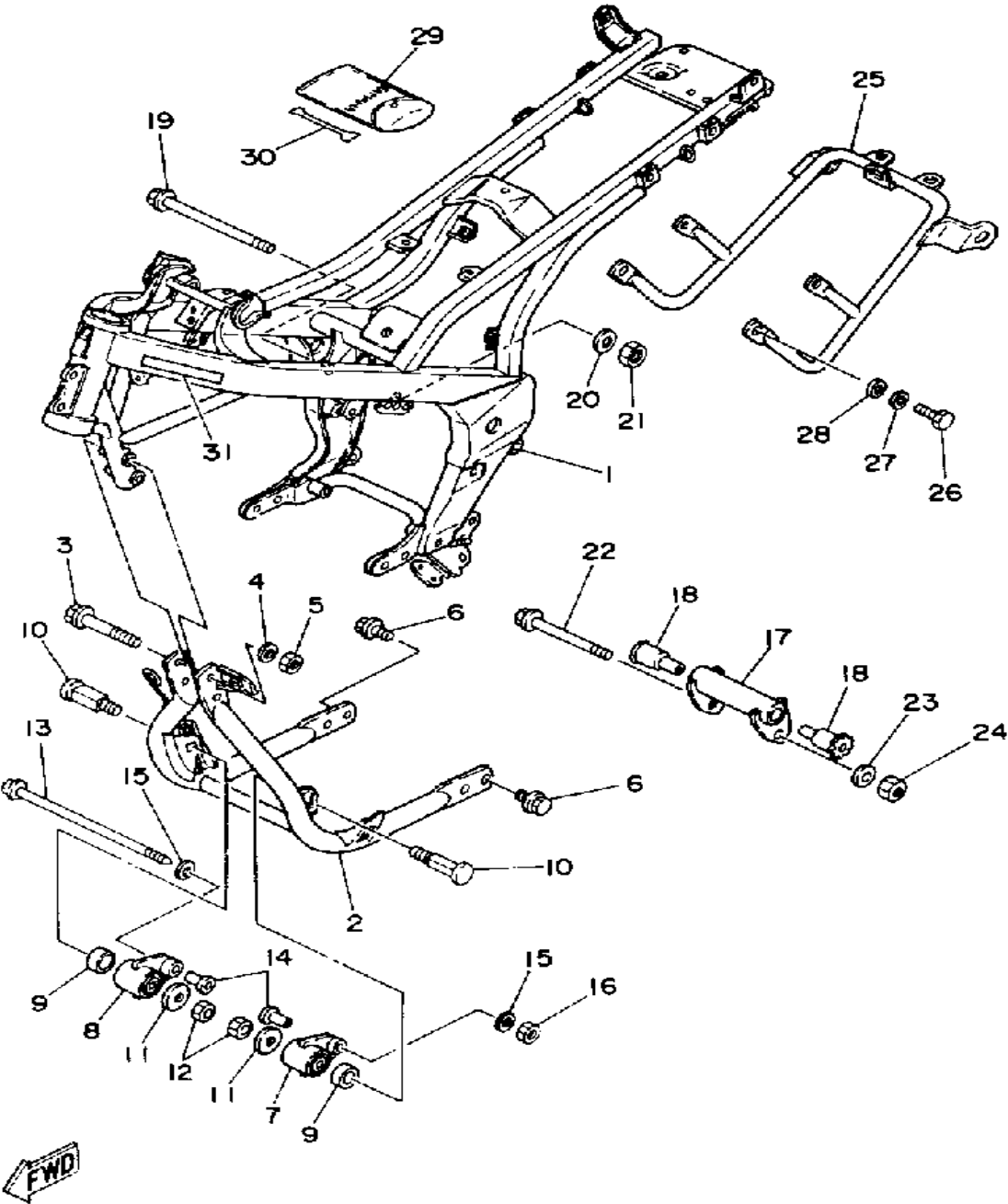


Ref. No.	Part Number	Description	Qty	Remarks
1	2RR-21110-02-35	FRAME, COMP.	1	SILVER
2	2GX-21140-01-00	TUBE, DOWN	1	
3	90105-08369-00	BOLT, WASHER BASED	2	
4	90201-08649-00	WASHER, PLATE	2	
5	95611-08100-00	NUT, U	2	
6	95811-08016-00	BOLT, FLANGE	4	
7	2GX-2140X-00-00	ENG BRKT SUB-COMP1SUB-COMP. 1 ...	1	
8	2GX-2140Y-00-00	ENG BRKT SUB-COMP2SUB-COMP. 2 ...	1	
9	2GX-21116-00-00	COLLAR	2	
10	5G3-21481-00-00	BOLT, ENG MNTNG 1	2	
11	90201-10321-00	WASHER, PLATE	2	
12	95611-10100-00	NUT, U	2	
13	90105-08473-00	BOLT, WASHER BASED	1	
14	2GX-21459-00-00	SPACER	2	
15	90201-08326-00	WASHER, PLATE	2	
16	95611-08100-00	NUT, U	1	
17	2AL-21489-00-00	BRACKET, ENG LOWER	1	
18	2GX-21486-00-00	DAMPER 2	2	
19	90105-08024-00	BOLT, WASHER BASED	1	
20	90201-08649-00	WASHER, PLATE	1	
21	95611-08100-00	NUT, U	1	
22	90105-08100-00	BOLT, WASHER BASED	1	
23	90201-08649-00	WASHER, PLATE	1	
24	95611-08100-00	NUT, U	1	
25	2RR-21165-00-00	HANDLE, STANDING	1	
26	97313-08016-00	BOLT, HEXAGON	4	
27	92990-08100-00	WASHER	4	

2RR110-7141

CONTINUED ON NEXT FRAME ►

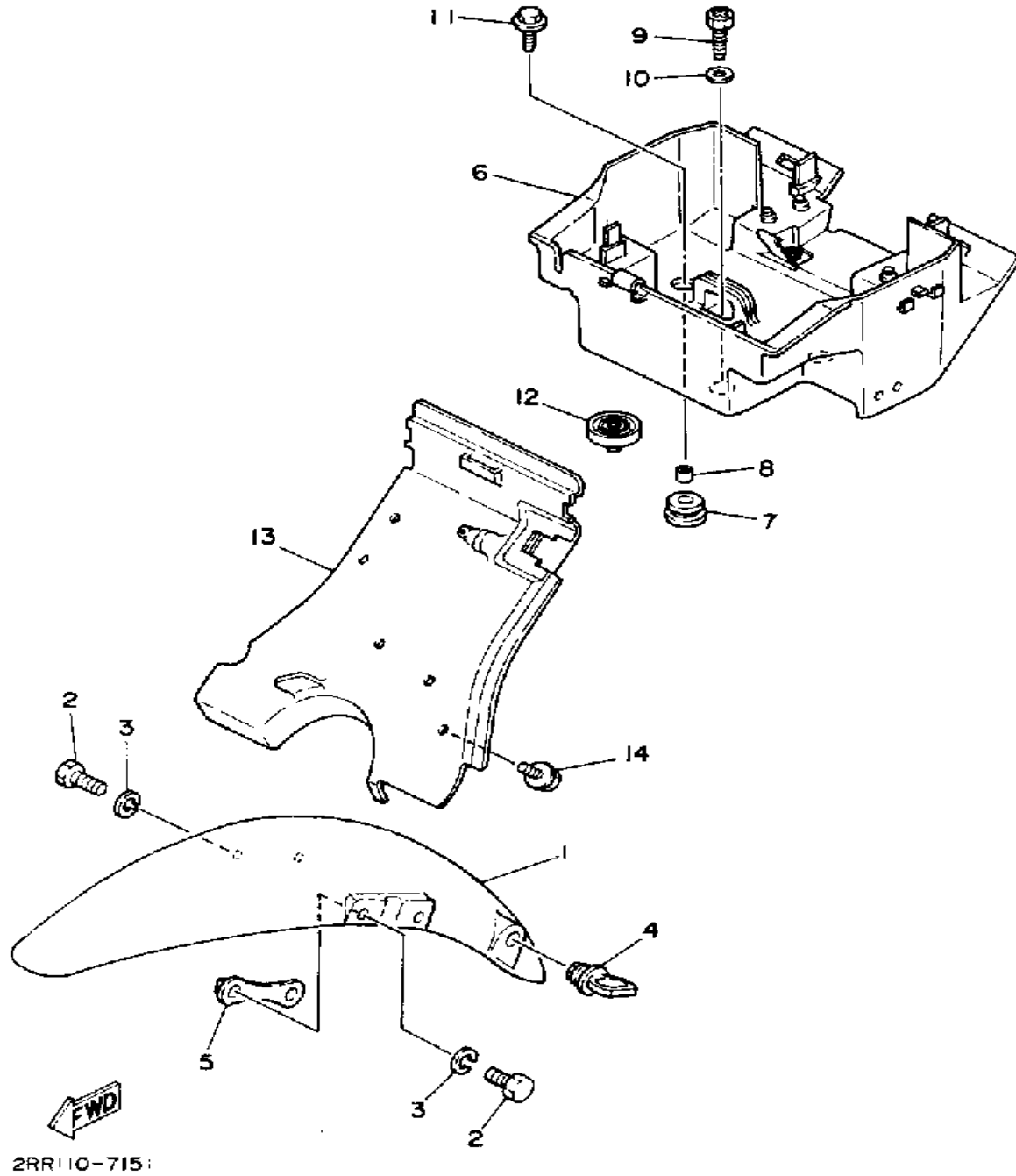
FRAME



Ref. No.	Part Number	Description	Qty	Remarks
28	92901-08600-00	WASHER	4	
29	2U2-W2810-00-00	TOOL KIT	1	
30	353-15361-00-00	GAUGE, LEVEL	1	
31	3FD-2179X-00-00	PLATE, EPA U 0	1	

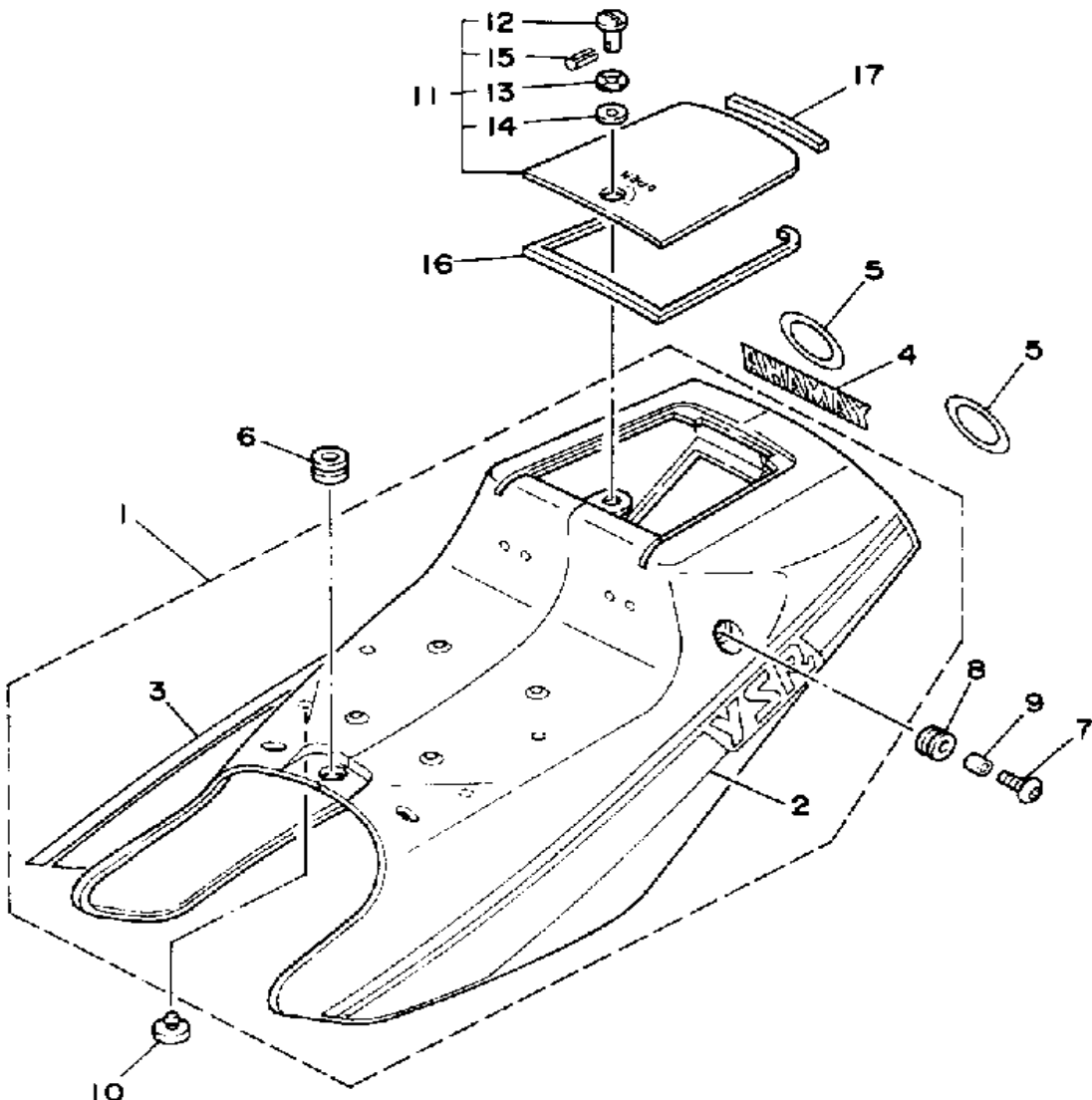
2RR110-7141

FENDER



Ref. No.	Part Number	Description	Qty	Remarks
1	2AL-21511-31-00	FENDER, FRONT	1	YAMAHA BLACK
2	97013-06012-00	BOLT	4	
3	92995-06100-00	WASHER, SPRING	4	
4	1A8-21518-00-00	HOLDER, CABLE	1	
5	2RR-21526-00-00	PLATE, STAY FTNG 1	1	
6	2RR-21610-00-00	FENDER, REAR	1	
7	(90480-06200-00)	GROMMET	3	
8	90387-067K6-00	COLLAR	3	
9	90153-06007-00	SCREW, HEXAGON (90153-06025)	1	
10	90201-065F3-00	WASHER, PLATE	1	
11	90159-06016-00	SCREW, WITH WASHER	2	
12	22W-24741-00-00	PAD, SEAT	1	
13	2AL-21629-00-00	GUARD, MUD	1	
14	90119-06056-00	BOLT, WITH WASHER	2	

SIDE COVER

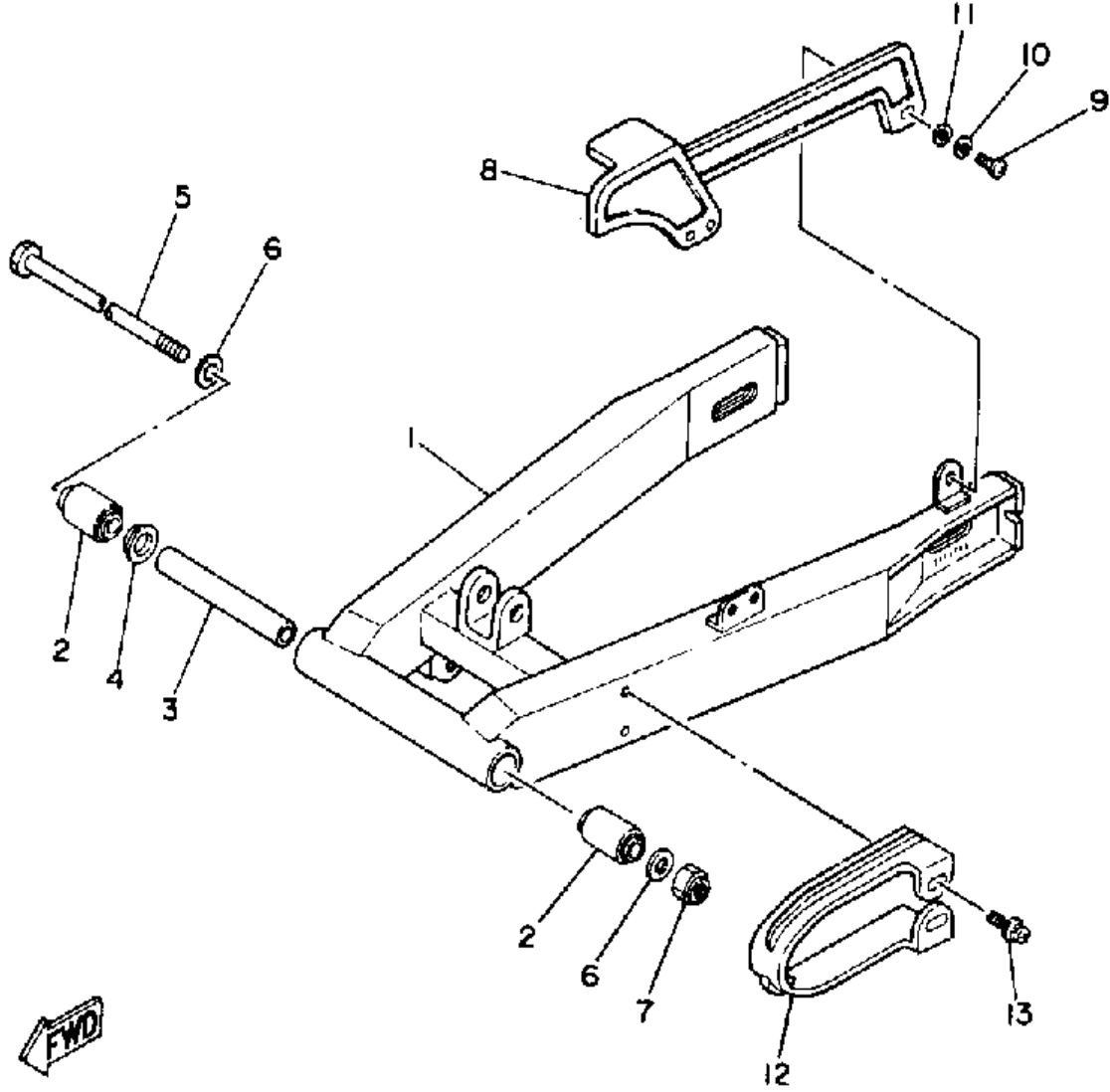


Ref. No.	Part Number	Description	Qty	Remarks
1	2AL-W2178-40-00	SIDE COVER COMP	1	YAMAHA BLACK
2	2UE-2173L-10-00	. GRAPHIC SET 1	1	
3	2UE-2174L-10-00	. GRAPHIC SET 2	1	
4	99231-00020-00	EMBLEM, YAMAHA	1	
5	2RR-2172W-01-00	COVER	2	
6	90480-14452-00	GROMMET	1	
7	90110-06200-00	BOLT, HEXAGON SOCKET HEAD	2	
8	90480-13398-00	GROMMET	2	
9	90387-067K6-00	COLLAR	2	
10	1M3-27114-00-00	STOPPER, MAIN STAND (10927-11400-00)	4	
11	2AL-W217E-40-00	LID ASSEMBLY (YB)	1	YAMAHA BLACK
12	90249-06191-00	. PIN, SPEC'L SHAPE	1	
13	90206-06090-00	. WASHER, WAVE	1	
14	92990-06200-00	. WASHER	1	
15	91690-25016-00	. PIN, SPRING	1	
16	2AL-21732-00-00	SEAL 1	1	
17	2AL-21735-00-00	SEAL 2	1	



3FD8110-1160

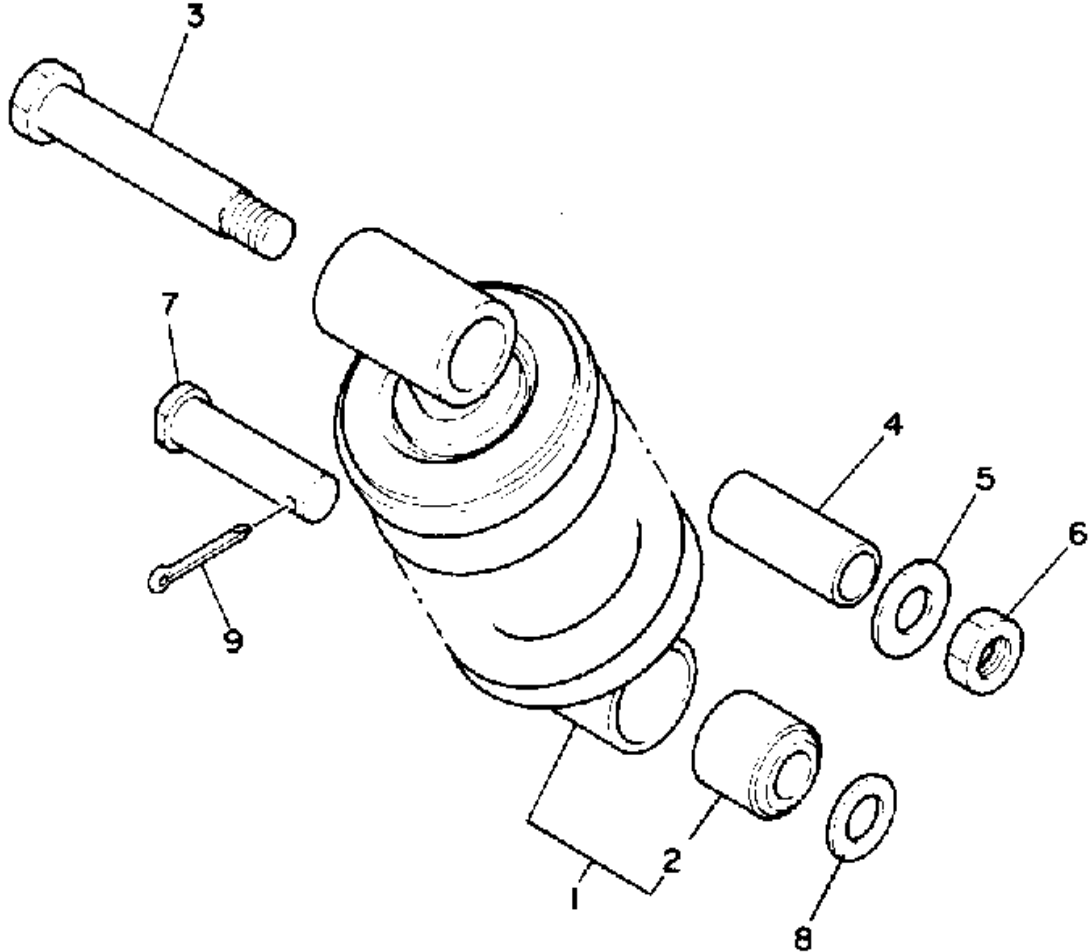
SWING ARM



Ref. No.	Part Number	Description	Qty	Remarks
1	2AL-22110-00-35	REAR ARM	1	SILVER
2	102-22123-00-00	BUSH 1	2	
3	90560-10286-00	SPACER	1	
4	90560-14287-00	SPACER	1	
5	486-22141-00-00	SHAFT, PIVOT	1	
6	92990-10200-00	WASHER, PLAIN	2	
7	95601-10100-00	NUT, U (95602-10100-00)	1	
8	21W-22199-00-00	SUPPORT, CHAIN	1	
9	98586-05016-00	SCREW, PAN HEAD	3	
10	92906-05100-00	WASHER, SPRING	3	
11	92906-05600-00	WASHER, PLATE	3	
12	2AL-22151-00-00	SEAL, GUARD	1	
13	90159-06084-00	SCREW, WITH WASHER	2	

2RR110-7180

REAR SHOCKS

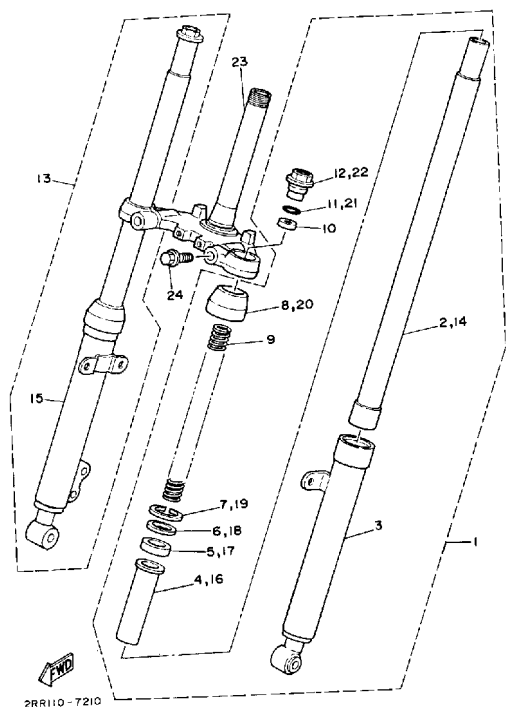


Ref. No.	Part Number	Description	Qty	Remarks
1	2AL-22210-01-26	SHK/ABS ASSEMBLY, REAR YREAR	1	COMPETITION YELLOW
2	5G3-22216-00-00	. BUSH, RR SHOCK ABS	1	
3	90109-104E4-00	BOLT	1	
4	90387-124T2-00	COLLAR	1	
5	90201-102G9-00	WASHER, PLATE	1	
6	95601-10100-00	NUT, U (95602-10100-00)	1	
7	90240-12116-00	PIN, CLEVIS	1	
8	92990-12600-00	WASHER, PLATE	1	
9	91401-30030-00	PIN, COTTER	1	



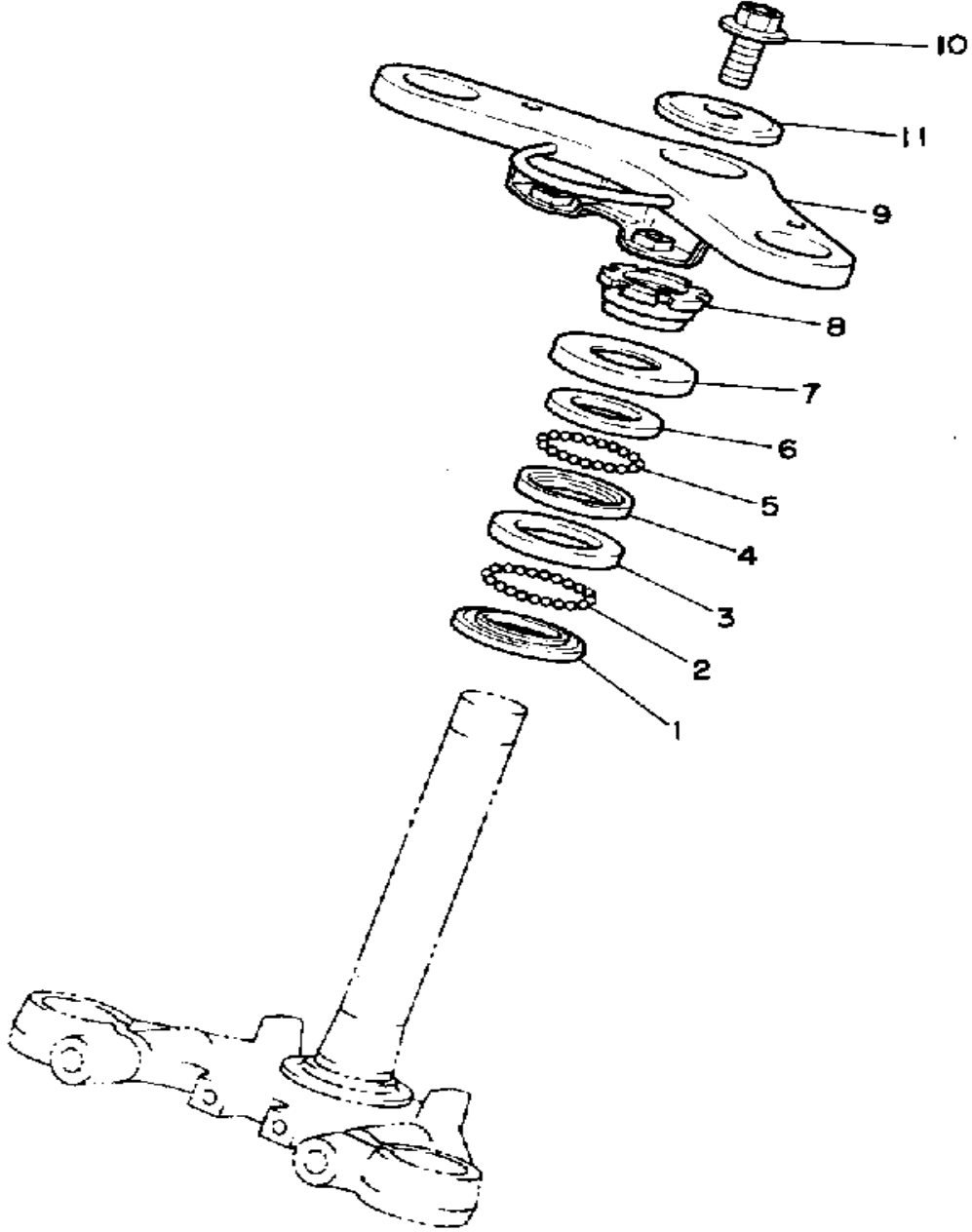
2AL010-6190

FRONT FORK



Ref. No.	Part Number	Description	Qty	Remarks
1	2RR-23102-00-00	FRONT FORK ASSEMBLY L ..	1	
2	2AL-23110-00-00	. INNER TUBE COMP. 1	1	
3	2RR-23106-00-35	. OUTER TUBE COMP. L	1	
4	5A1-23125-00-00	. METAL, SLIDE 1	1	
5	93110-27010-00	. OIL SEAL (5R6)	1	
6	5A1-23146-00-00	. WASHR, OIL SEAL	1	
7	93420-40064-00	. CIRCLIP	1	
8	5A1-23144-00-00	. SEAL, DUST	1	
9	2AL-23141-00-00	. SPRING, FRONT FORK	1	
10	5R2-23142-00-00	. SEAT, SPRING UPPER	1	
11	93210-17570-00	. O-RING	1	
12	2AL-23111-00-00	. BOLT, CAP	1	
13	2RR-23103-00-00	FRONT FORK ASSEMBLY R ..	1	
14	2AL-23110-00-00	. INNER TUBE COMP. 1	1	
15	2RR-23107-00-35	. OUTER TUBE COMP. R	1	SILVER
16	5A1-23125-00-00	. METAL, SLIDE 1	1	
17	93110-27010-00	. OIL SEAL (5R6)	1	
18	5A1-23146-00-00	. WASHR, OIL SEAL	1	
19	93420-40064-00	. CIRCLIP	1	
20	5A1-23144-00-00	. SEAL, DUST	1	
21	93210-17570-00	. O-RING	1	
22	2AL-23111-00-00	. BOLT, CAP	1	
23	3AX-23340-00-00	UNDER BRACKET	1	
24	95811-10030-00	BOLT, FLANGE	2	

STEERING

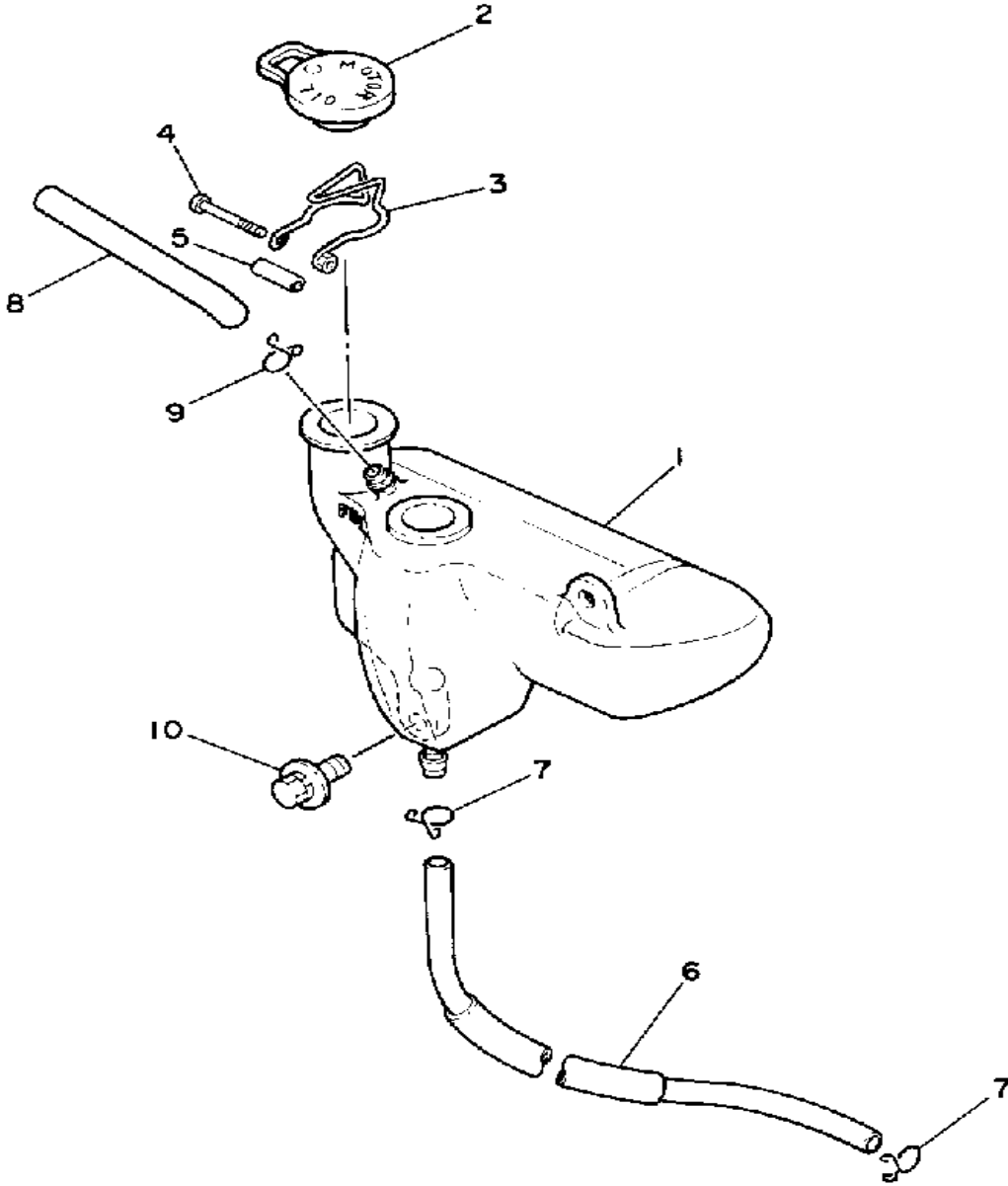


Ref. No.	Part Number	Description	Qty	Remarks
1	156-23411-00-00	RACE, BALL 1	1	
2	93501-04011-00	BALL	19	
3	156-23412-00-00	RACE, BALL 2	1	
4	22F-23412-01-00	RACE, BALL 2	1	
5	93503-16010-00	BALL	22	
6	22F-23411-01-00	RACE, BALL 1	1	
7	122-23416-00-00	COVER, BALL RACE 2	1	
8	90179-25051-00	NUT	1	
9	2AL-23435-00-35	CROWN, HANDLE	1	
10	90105-10427-00	BOLT, WASHER BASED	1	
11	90209-10021-00	WASHER, SPEC'L SHAP	1	



2AL010-6200

OIL TANK

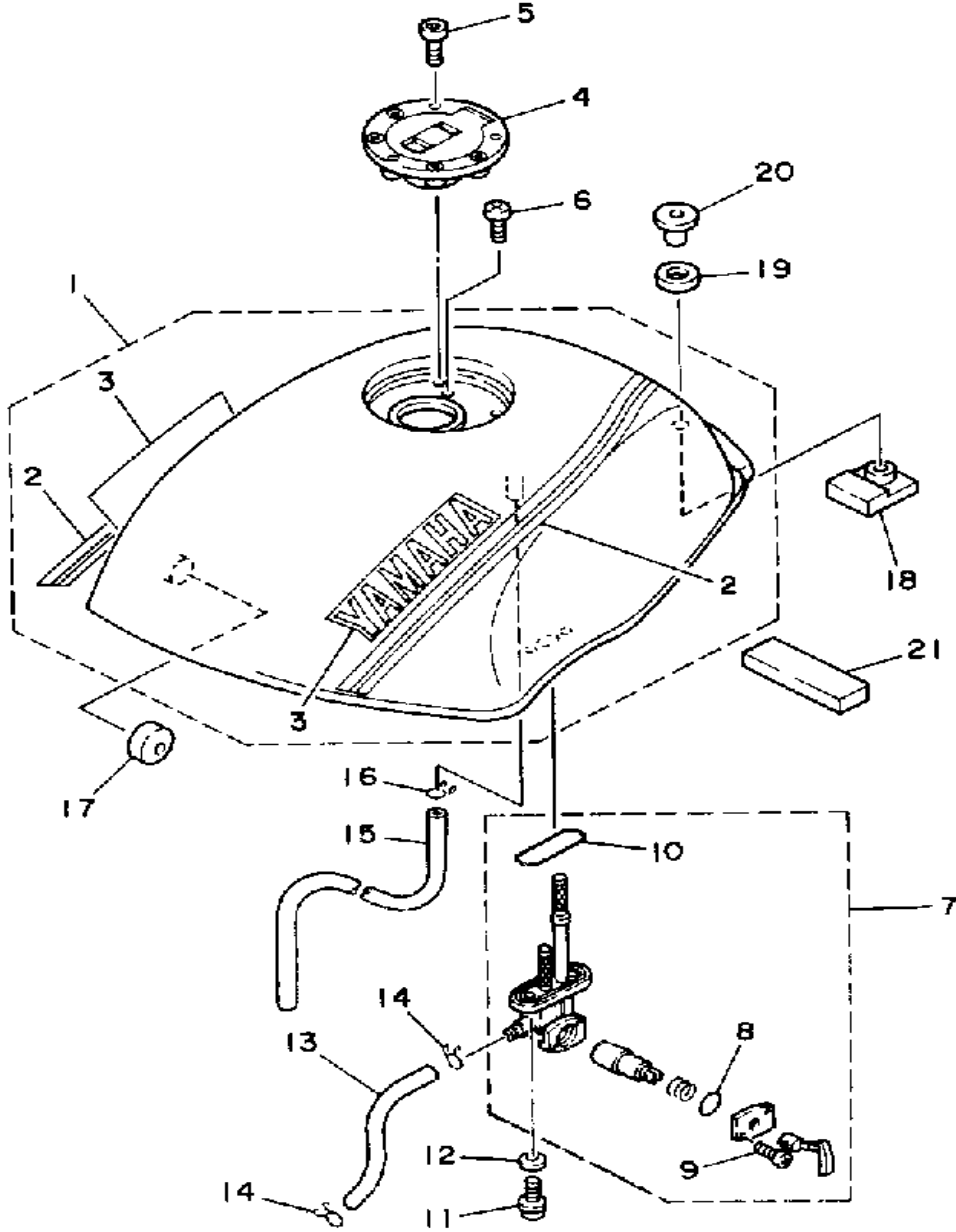


Ref. No.	Part Number	Description	Qty	Remarks
1	2AL-21751-00-00	TANK, OIL	1	
2	1T9-21771-00-00	BODY, CAP	1	
3	2AL-21718-00-00	RING, STOP	1	
4	98511-04030-00	SCREW, PAN HEAD	1	
5	90387-065G1-00	COLLAR	1	
6	90445-097E6-00	HOSE	1	
7	90467-08003-00	CLIP	2	
8	90445-09064-00	HOSE	1	
9	90467-08003-00	CLIP	1	
10	90119-06056-00	BOLT, WITH WASHER	2	



2AL010-6170

FUEL TANK

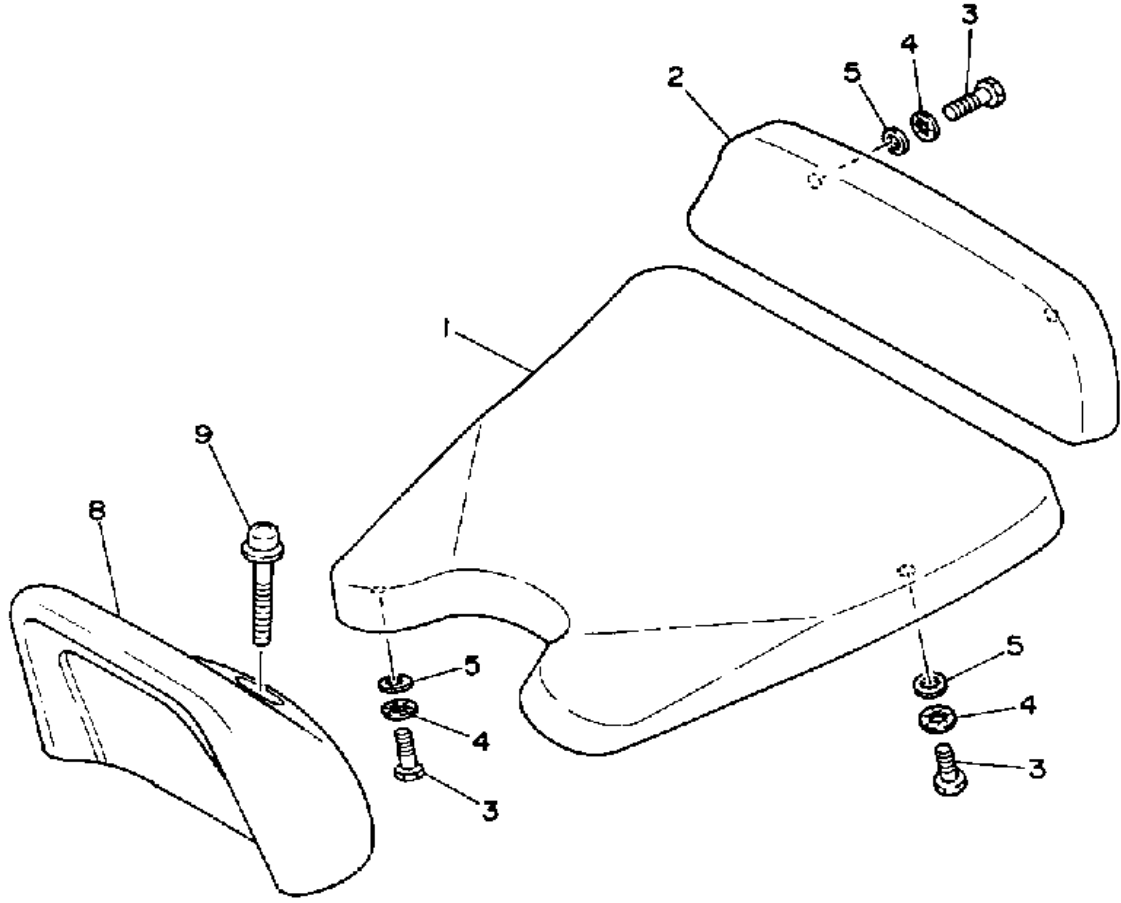


Ref. No.	Part Number	Description	Qty	Remarks
1	2AL-24110-00-X8	FUEL TANK	1	YAMAHA BLACK
2	2UE-24240-11-00	. GRAPHIC SET	1	
3	99221-00035-00	. EMBLEM, YAMAHA	2	
4	1JK-24602-13-00	CAP ASSEMBLY	1	
5	90110-05112-00	BOLT, HEXAGON SOCKET HEAD	3	
6	98580-05010-00	SCREW, PAN HEAD	1	
7	2AL-24500-00-00	FUEL COCK ASSEMBLY 1 ...	1	
8	4X8-24534-00-00	. SEAL, COCK	1	
9	98580-03008-00	. SCREW, PAN HEAD	2	
10	4X8-24512-00-00	. O-RING	1	
11	90149-06011-00	SCREW	2	
12	90202-05187-00	WASHER, PLATE	2	
13	90445-09083-00	HOSE	1	
14	90467-08003-00	CLIP	2	
15	90445-105G5-00	HOSE	1	
16	90467-09006-00	CLIP	1	
17	4U5-24181-00-00	DAMPER, LOCATING 1	2	
18	5R2-24183-00-00	DAMPER, LOCATING 3	1	
19	90202-14077-00	WASHER, PLATE	1	
20	90387-075H4-00	COLLAR	1	
21	1KT-2414G-00-00	SEAL	1	

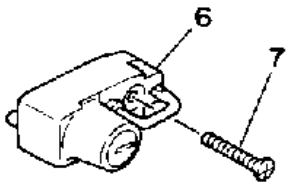


3FD8110-1220

SEAT



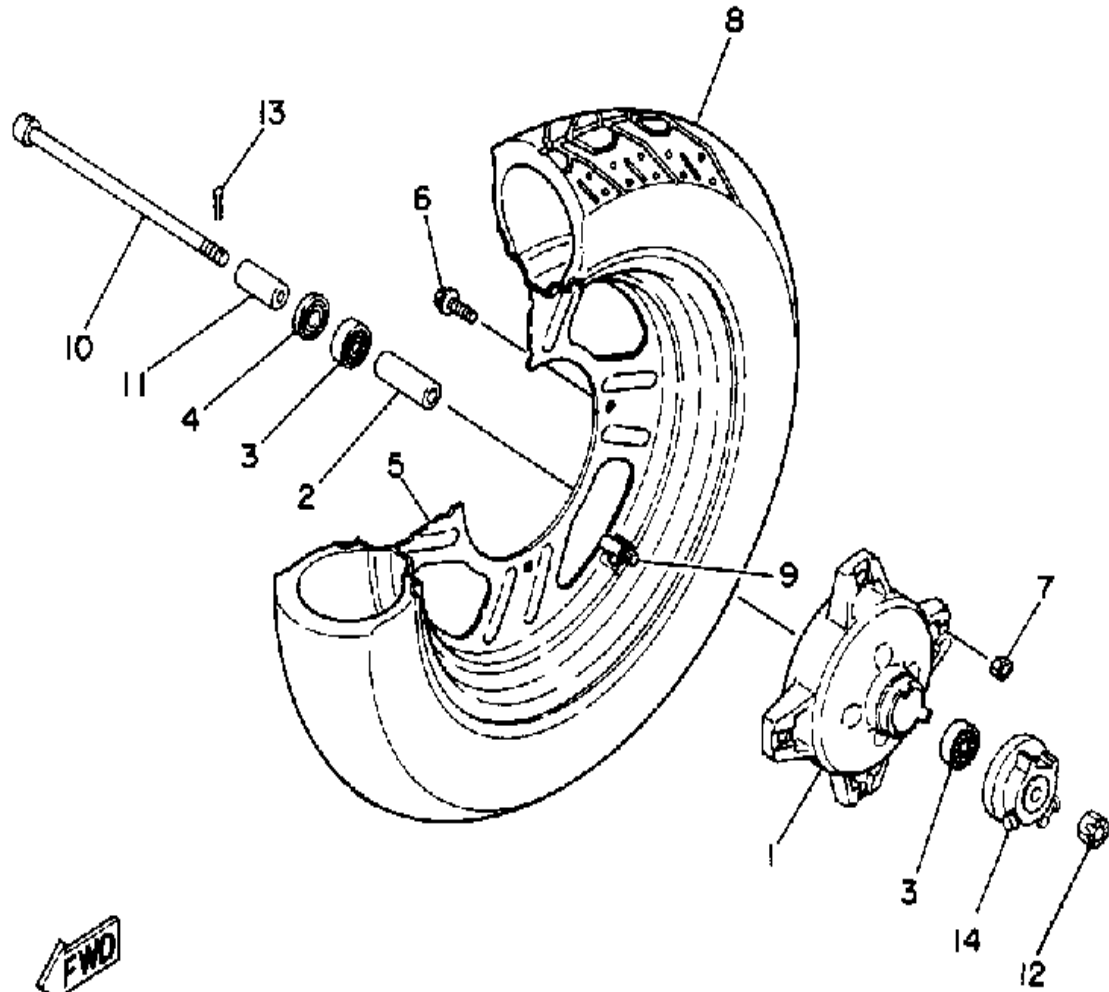
Ref. No.	Part Number	Description	Qty	Remarks
1	2RR-24710-00-00	SINGLE SEAT ASSEMBLY	1	
2	2AL-2840F-01-00	BACK REST ASSEMBLY	1	
3	97313-06016-00	BOLT, HEXAGON	6	
4	92901-06700-00	WASHER, WAVE (92902-06700)	6	
5	92990-06600-00	WASHER, PLATE	6	
6	26H-21308-00-00	HELMET HANGER ASSEMBLY (4R8-21308-00)	1	
7	90149-06154-00	SCREW	1	
8	2RR-24741-00-00	PAD, SEAT	1	
9	90159-06064-00	SCREW, WITH WASHER	1	



FWD

2RR110-7230

FRONT WHEEL

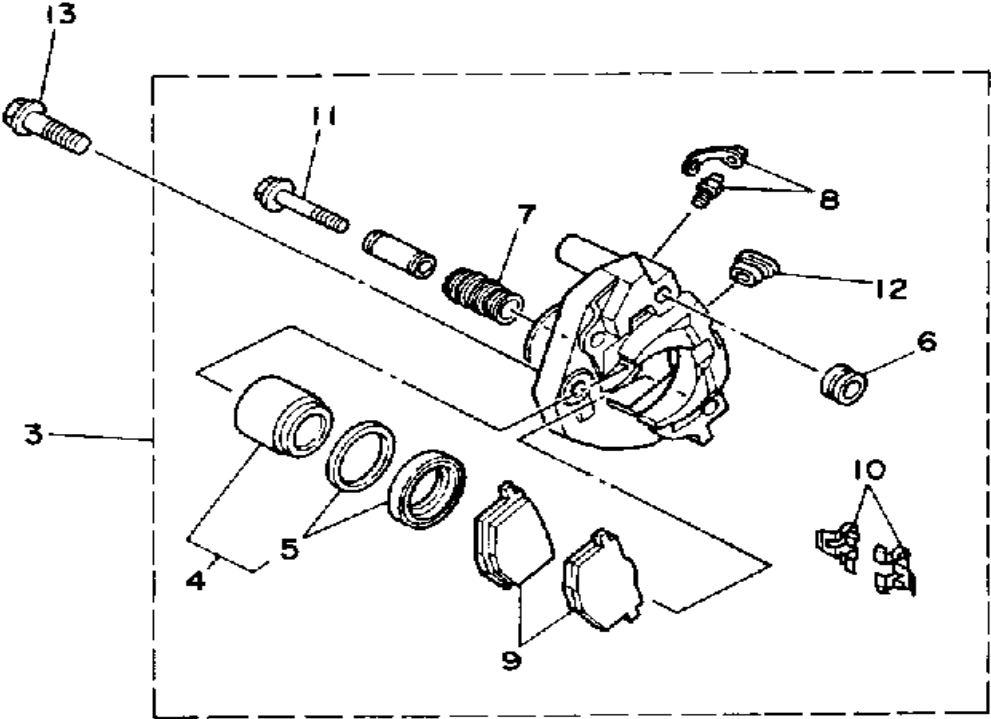


Ref. No.	Part Number	Description	Qty	Remarks
1	2AL-25111-01-36	HUB, FRONT	1	WHITE
2	90560-10104-00	SPACER	1	
3	93306-20005-00	BEARING (B6200)	2	
4	93102-17271-00	OIL SEAL	1	
5	2AL-2510A-01-36	RIM ASSEMBLY	1	WHITE
6	90105-08426-00	BOLT, WASHER BASED	4	
7	90185-08139-00	NUT, SELF-LOCKING	4	
8	94135-126J3-00	3.50-12 ML17 BS	1	UR BRIDGE STONE
9	93900-00036-00	VALVE, RIM (93900-00027-00)	1	
10	99999-02216-00	AXLE, WHEEL KIT	1	
11	90387-104J5-00	COLLAR	1	
12	90171-10004-00	NUT, CASTLE	1	
13	91490-20020-00	PIN, COTTER	1	
14	2AL-25190-00-00	GEAR UNIT ASSEMBLY	1	

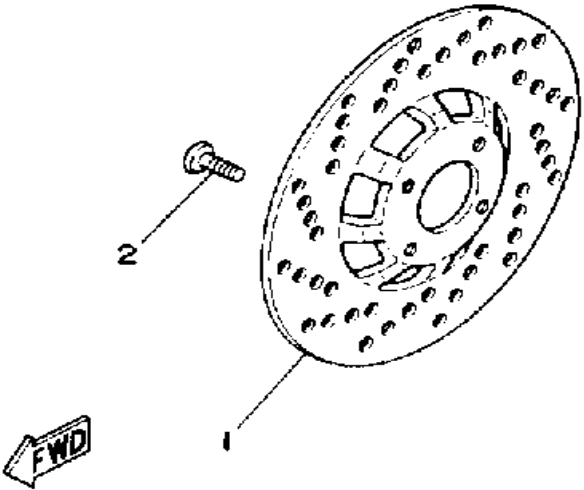


2AL010-6240

FRONT BRAKE CALIPER

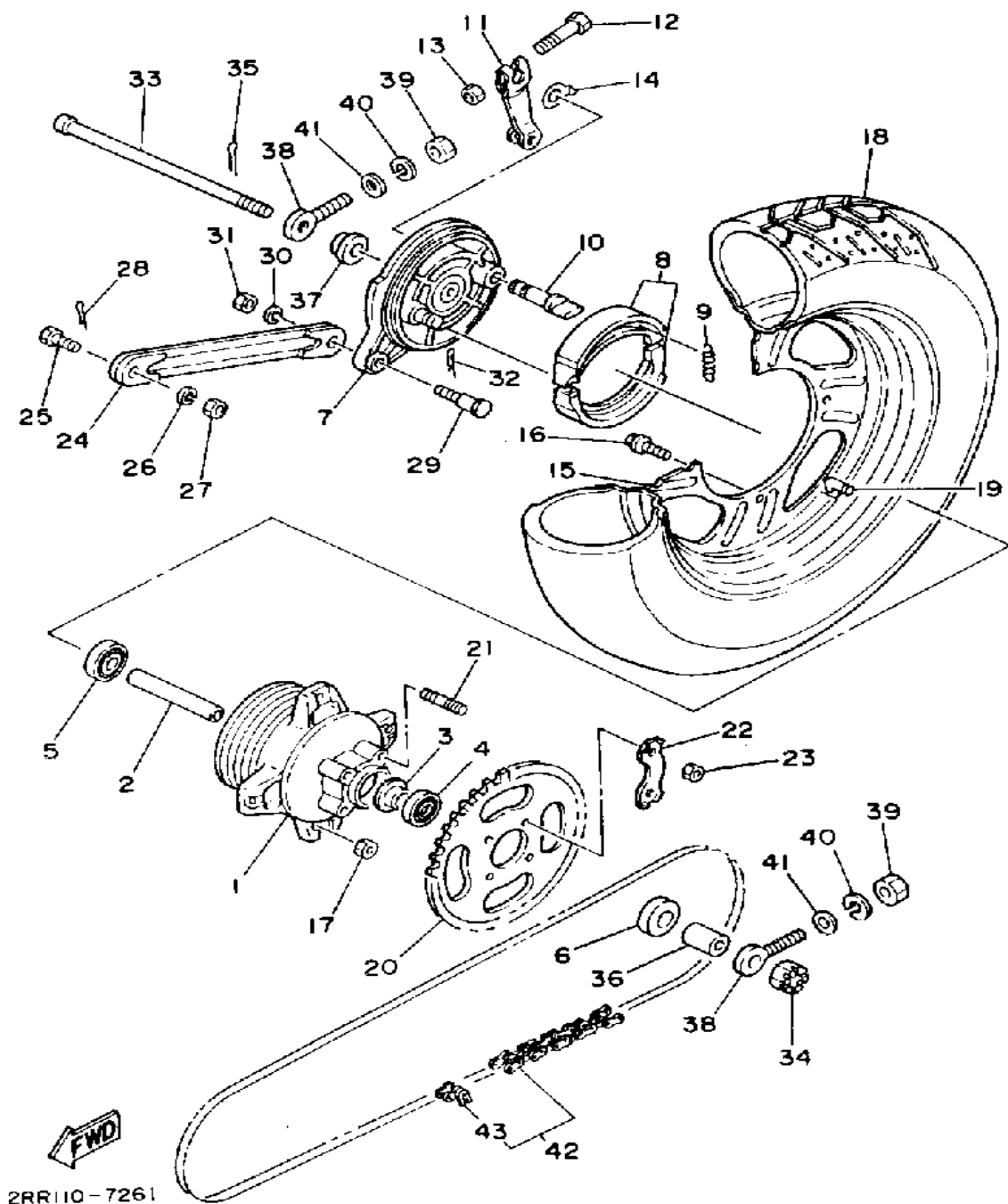


Ref. No.	Part Number	Description	Qty	Remarks
1	2RR-25831-00-00	DISC, BRAKE	1	
2	90109-08718-00	BOLT	4	
3	2AL-2580U-00-00	CALIPER ASSEMBLY RIGHT ..	1	
4	34X-W0057-00-00	. PISTON ASSEMBLY, CALIPER	1	
5	34X-W0047-00-00	.. CALIPER SEAL KIT	1	
6	5R2-25937-00-00	. BOOT 2	1	
7	34X-25937-00-00	. BOOT 2	1	
8	51L-W0048-00-00	. BLEED SCREW KIT	1	
9	34X-W0046-02-00	. BRAKE PAD KIT	1	
10	34X-25919-00-00	. SUPPORT, PAD	2	
11	2GV-25926-00-00	. BOLT	1	
12	34X-25845-00-00	. CAP, INDICATOR	1	
13	90105-10200-00	BOLT, WASHER BASED	2	



2RR110-7250

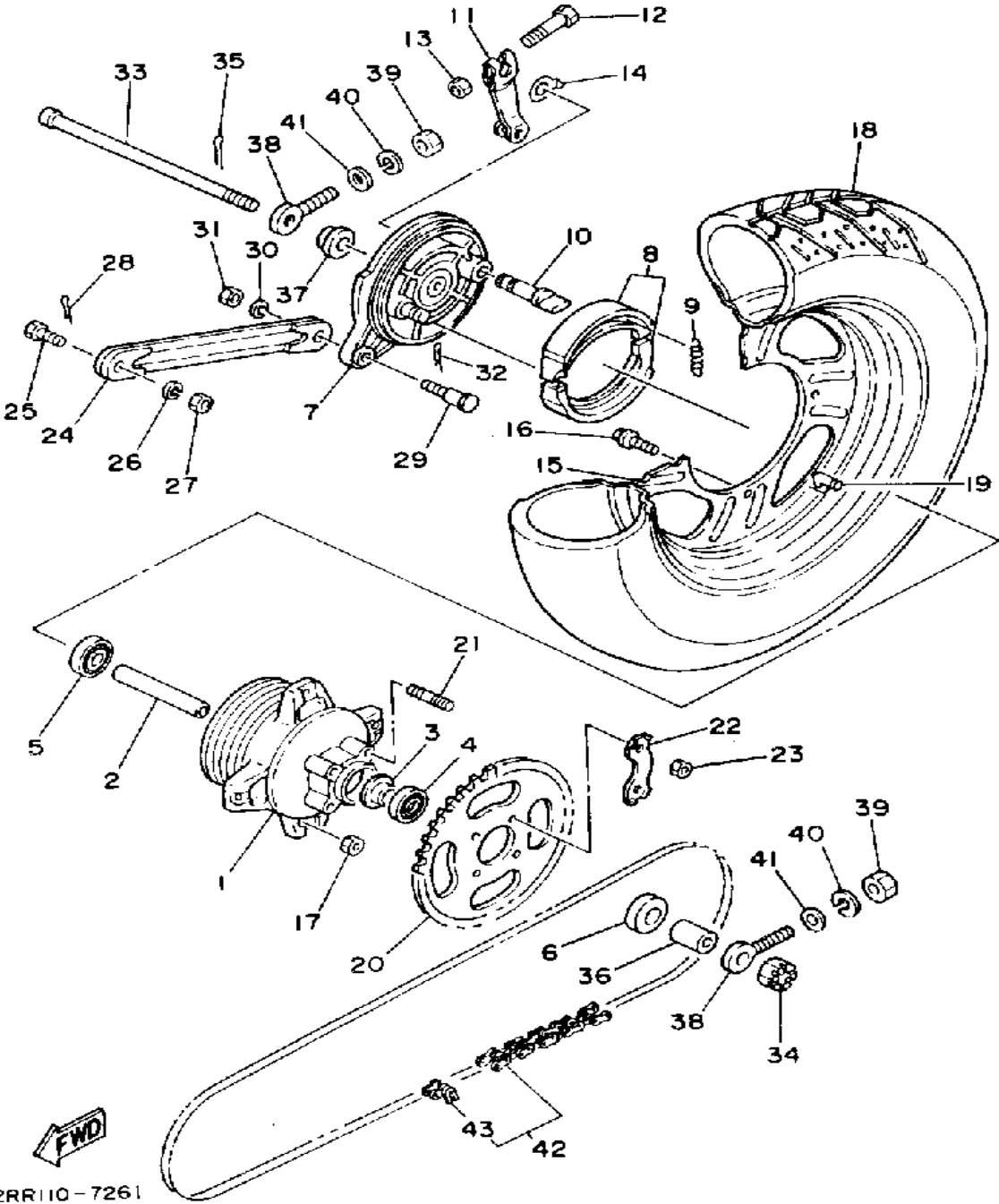
REAR WHEEL



Ref. No.	Part Number	Description	Qty	Remarks
1	2RR-25311-00-36	HUB, REAR	1	WHITE
2	2JL-W2536-01-00	BRAKE SHOE SET	1	
3	109-25315-00-00	FLANGE, SPACER	1	
4	93306-30101-00	BEARING (B6301)	1	
5	93306-30109-00	BEARING	1	
6	93106-20033-00	OIL SEAL (3TU)	1	
7	1M3-25321-02-36	PLATE, BRAKE SHOE	1	WHITE
8	2JL-W2536-01-00	BRAKE SHOE SET	1	
9	90506-15260-00	SPRING, TENSION	2	
10	3Y6-25351-00-00	CAMSHAFT	1	
11	2N3-25155-00-00	LEVER, CAMSHAFT 1	1	
12	90101-06278-00	BOLT	1	
13	95380-06600-00	NUT	1	
14	3Y6-2533A-01-00	PLATE, INDICATOR	1	
15	2AL-2510A-01-36	RIM ASSEMBLY	1	WHITE
16	90105-08426-00	BOLT, WASHER BASED	4	
17	90185-08139-00	NUT, SELF-LOCKING	4	
18	94140-126J2-00	4.00-12 ML16A BS	1	UR BRIDGE- STONE
19	93900-00036-00	VALVE, RIM (93900-00027-00)	1	INOUE
20	288-25444-10-00	SPROCKET, DRVN 44T	1	
21	90116-08218-00	BOLT, STUD	4	
22	2AL-25412-00-00	WASHER	2	
23	90170-08258-00	NUT	4	
24	561-25371-00-00	BAR, TENSION	1	
25	90109-08368-00	BOLT	1	
26	92990-08100-00	WASHER	1	
27	95303-08700-00	NUT	1	
28	91490-20020-00	PIN, COTTER	1	
29	90109-08183-00	BOLT	1	

CONTINUED ON NEXT FRAME ►

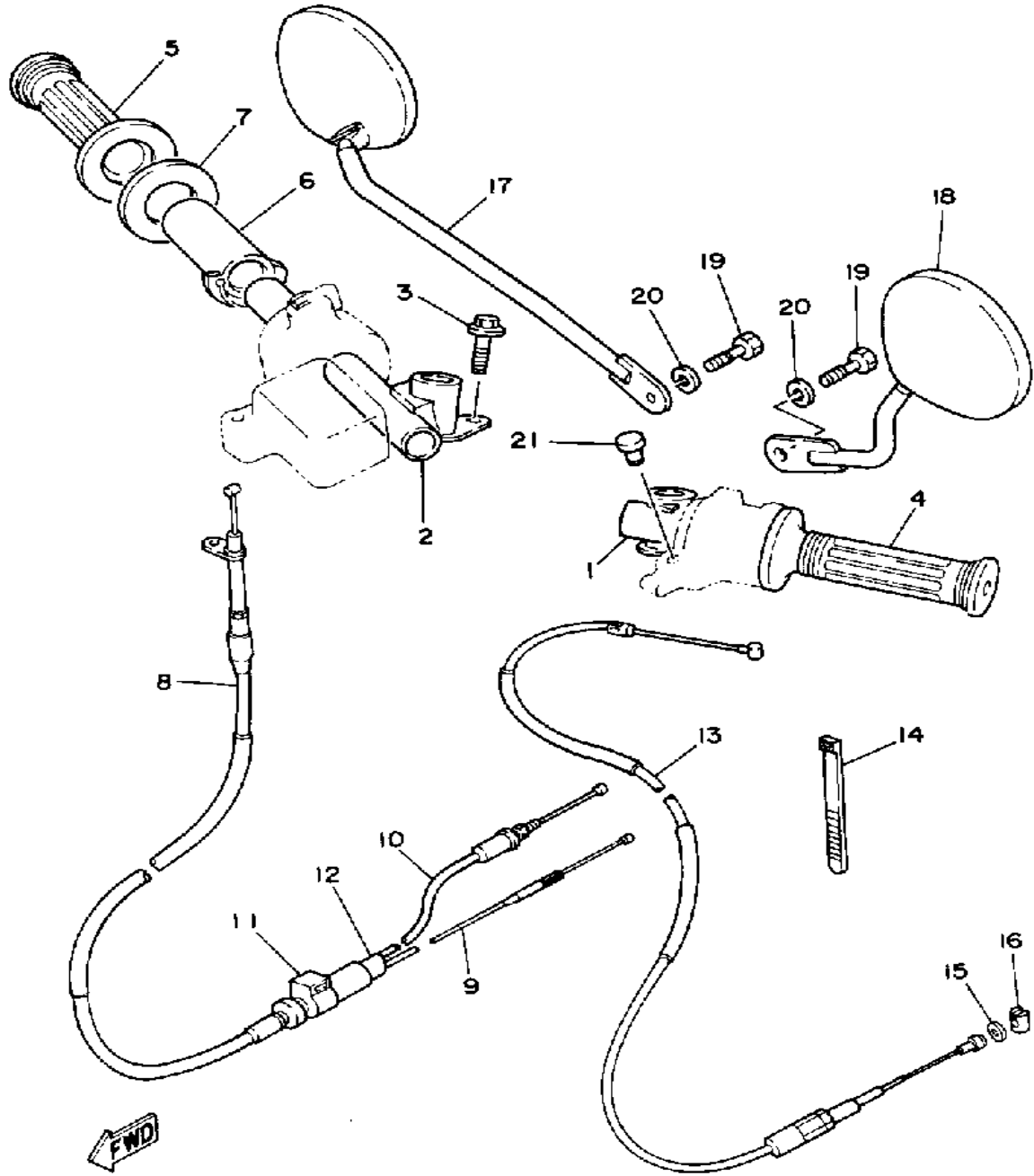
REAR WHEEL



Ref. No.	Part Number	Description	Qty	Remarks
30	92990-08100-00	WASHER	1	
31	95303-08700-00	NUT	1	
32	90468-10050-00	CLIP	1	
33	439-25381-01-00	AXLE, WHEEL	1	
34	90171-12005-00	NUT, CASTLE	1	
35	91401-30030-00	PIN, COTTER	1	
36	90387-122R0-00	COLLAR	1	
37	90387-121R9-00	COLLAR	1	
38	102-25389-00-00	PULLER, CHAIN 2	2	
39	95380-06600-00	NUT	2	
40	92995-06100-00	WASHER, SPRING	2	
41	92901-06600-00	WASHER	2	
42	94580-52100-00	420-100L	1	DAIDO
43	94680-52001-00	. JOINT, CHAIN (DID 420M)	1	DAIDO

2RR110-7261

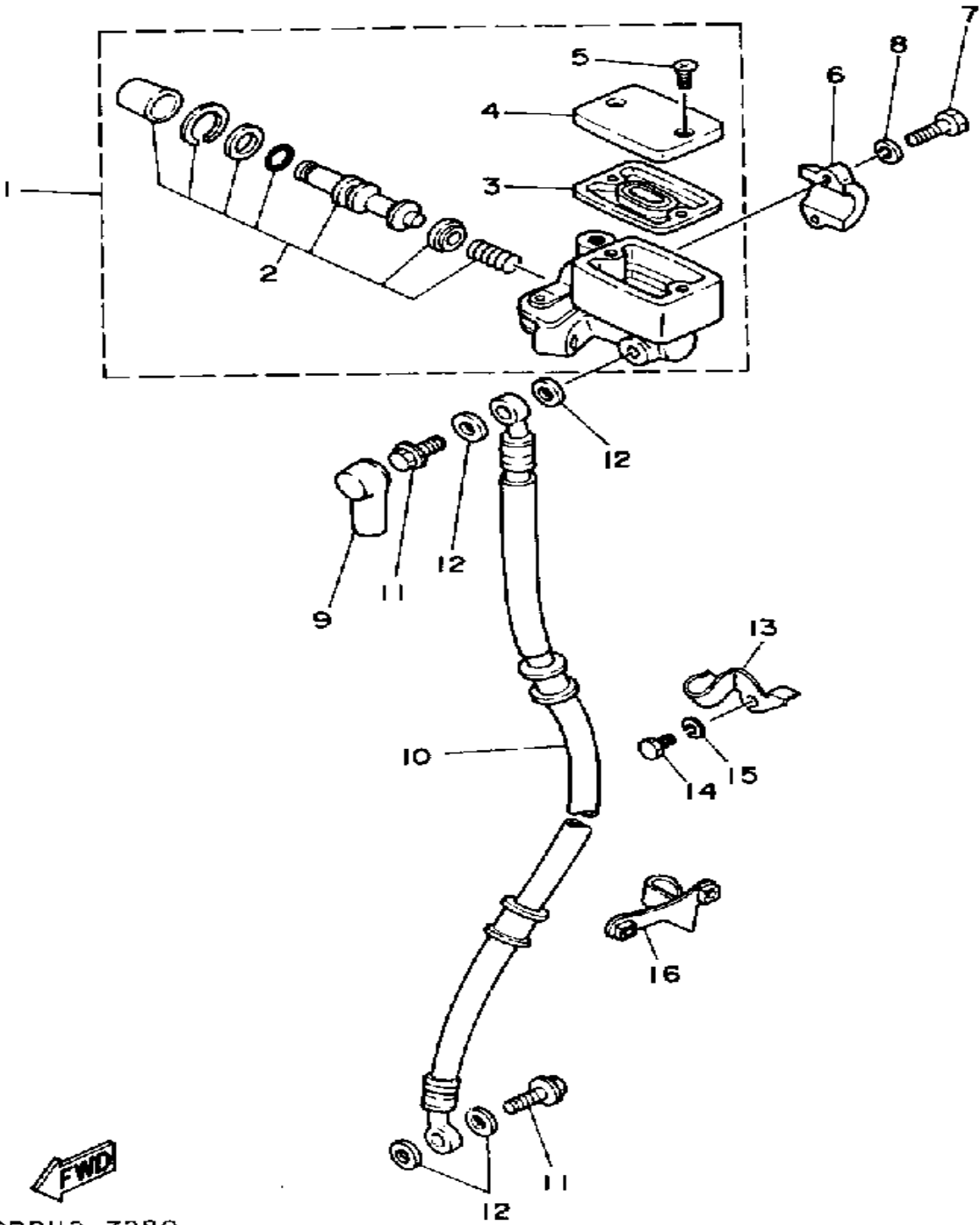
HANDLEBAR - CABLE



Ref. No.	Part Number	Description	Qty	Remarks
1	2RR-26121-00-00	HANDLEBAR LH	1	
2	2RR-26122-00-00	HANDLEBAR RH	1	
3	90105-06707-00	BOLT (95023-06016-00)	2	
4	1E6-26241-00-00	GRIP LH	1	
5	1A0-26242-01-00	GRIP (RIGHT)	1	
6	1A0-26243-01-00	TUBE, THRTL GUIDE	1	
7	90201-261L0-00	WASHER, PLATE	1	
8	10W-26311-00-00	CABLE, THROTTLE 1	1	
9	2AL-26312-00-00	CABLE, THROTTLE 2	1	
10	4U5-26321-00-00	CABLE, PUMP	1	
11	4U1-26261-00-00	CONNECTOR, CABLE	1	
12	5L6-26272-00-00	CAP	1	
13	2AL-26335-00-00	CABLE, CLUTCH	1	
14	90465-13169-00	CALMP	1	
15	92901-06600-00	WASHER	1	
16	164-26363-00-00	END, CABLE	1	
17	2AL-26290-00-00	MIRROR ASSEMBLY (RIGHT) .	1	
18	2AL-26280-00-00	MIRROR ASSEMBLY (LEFT) ..	1	
19	97016-08020-00	BOLT	2	
20	92906-08100-00	WASHER, SPRING	2	
21	90338-09012-00	PLUG	2	

2RR110-7271

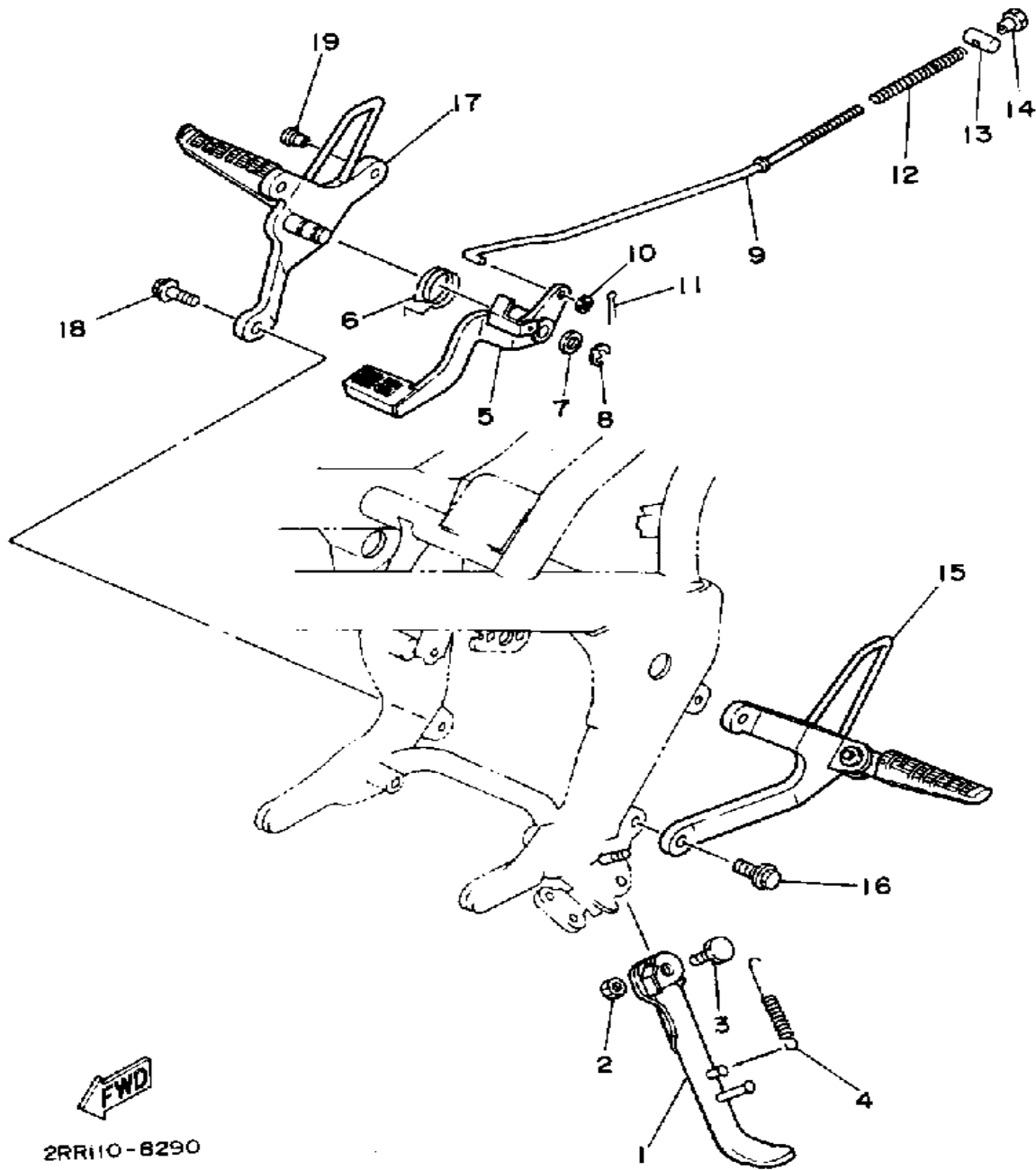
FRONT MASTER CYLINDER



Ref. No.	Part Number	Description	Qty	Remarks
1	3AX-25870-00-00	MSTR.CYLINDER.SUB.ASSEMBLY.ASSEMBLY	1	
2	56A-W0041-00-00	. CYLINDER KIT, MASTER	1	
3	55U-25854-00-00	. DIAPHRAGM, RESERVOIR . . .	1	
4	2KF-25852-01-00	. CAP, RESERVOIR	1	
5	98706-04012-00	. SCREW, FLAT HEAD	2	
6	56A-25867-00-00	BRACKET, MASTER CYLINDER	1	
7	97016-06025-00	BOLT	2	
8	92906-06100-00	WASHER, SPRING	2	
9	4L0-25862-00-00	BOOT, MASTER CYLINDER . . .	1	
10	2AL-25872-01-00	HOSE, BRAKE 1	1	
11	90401-10034-00	BOLT, UNION	2	
12	90201-10118-00	WASHER, PLATE	4	
13	2AL-25875-00-00	HOLDER, BRKE HOSE 1	1	
14	97026-06012-00	BOLT	1	
15	92906-06100-00	WASHER, SPRING	1	
16	2RR-25876-00-00	HOLDER, BRKE HOSE 2	1	

FWD
2RR110-7280

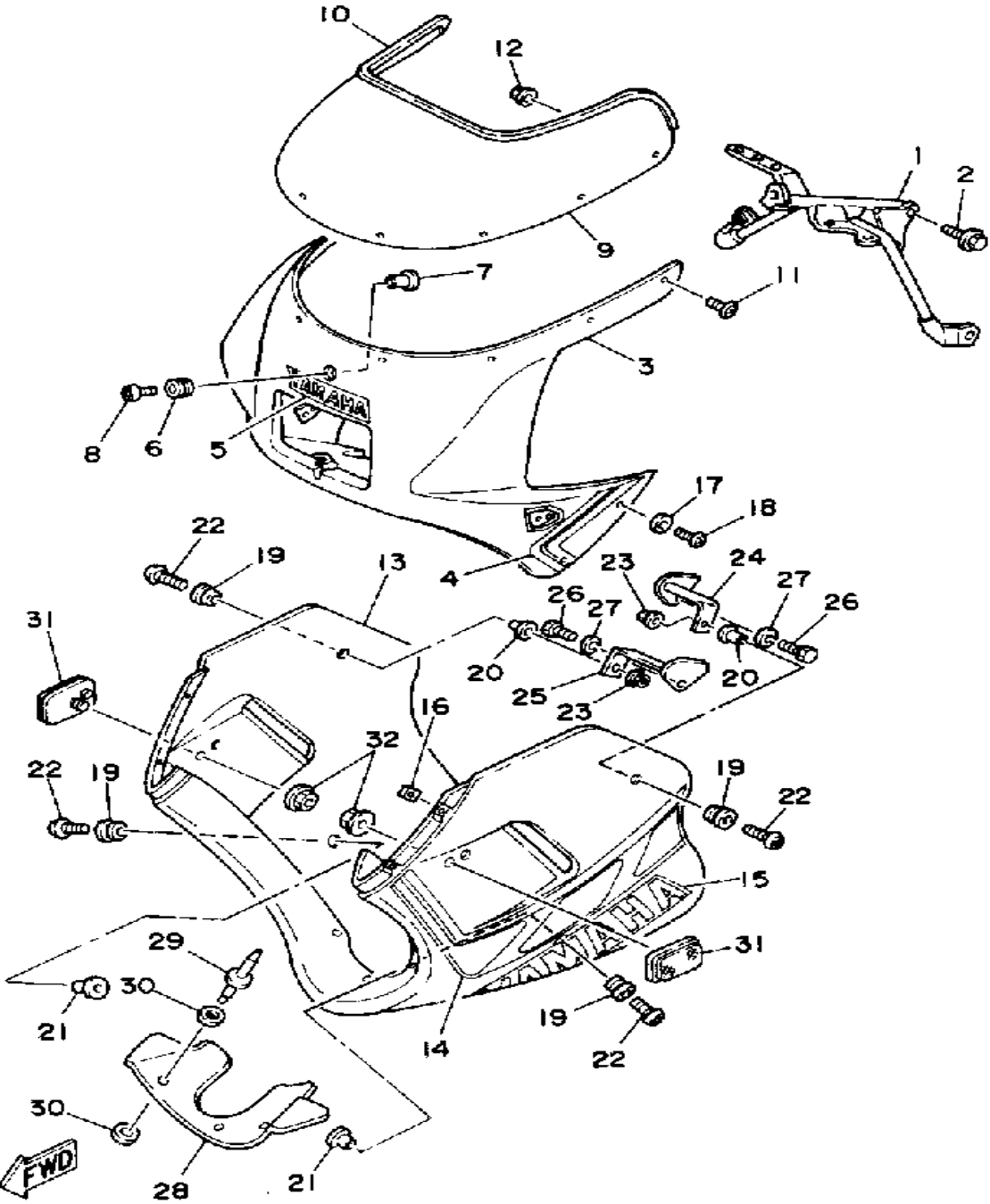
STAND - FOOTREST



Ref. No.	Part Number	Description	Qty	Remarks
1	2RR-27311-00-R4	STAND, SIDE	1	BLACK (FOR ELECTRO DEPOSIT)
2	90185-08055-00	NUT, SELF-LOCKING	1	
3	90109-08034-00	BOLT	1	
4	90506-26330-00	SPRING, TENSION	1	
5	2AL-27211-01-91	PEDAL, BRAKE	1	UNI CHROME
6	90508-32716-00	SPRING, TORSION	1	
7	90201-14212-00	WASHER, PLATE	1	
8	93430-10015-00	CIRCLIP, E-TYPE	1	
9	2AL-27231-00-00	ROD, BRAKE	1	
10	92901-06600-00	WASHER	1	
11	91490-20020-00	PIN, COTTER	1	
12	90501-10245-00	SPRING, COMPRESSION	1	
13	90249-12008-00	PIN	1	
14	90179-06411-00	NUT	1	
15	2RR-27410-00-35	FRT FOOTREST ASSEMBLY L (LEFT)	1	SILVER
16	90105-08307-00	BOLT, WASHER BASED	2	
17	2RR-27420-00-35	FRT FOOTREST ASSEMBLY R (RIGHT)	1	SILVER
18	90105-08307-00	BOLT, WASHER BASED	2	
19	90338-07124-00	PLUG	1	

FWD
2RR110-B290

FAIRING - COWLING

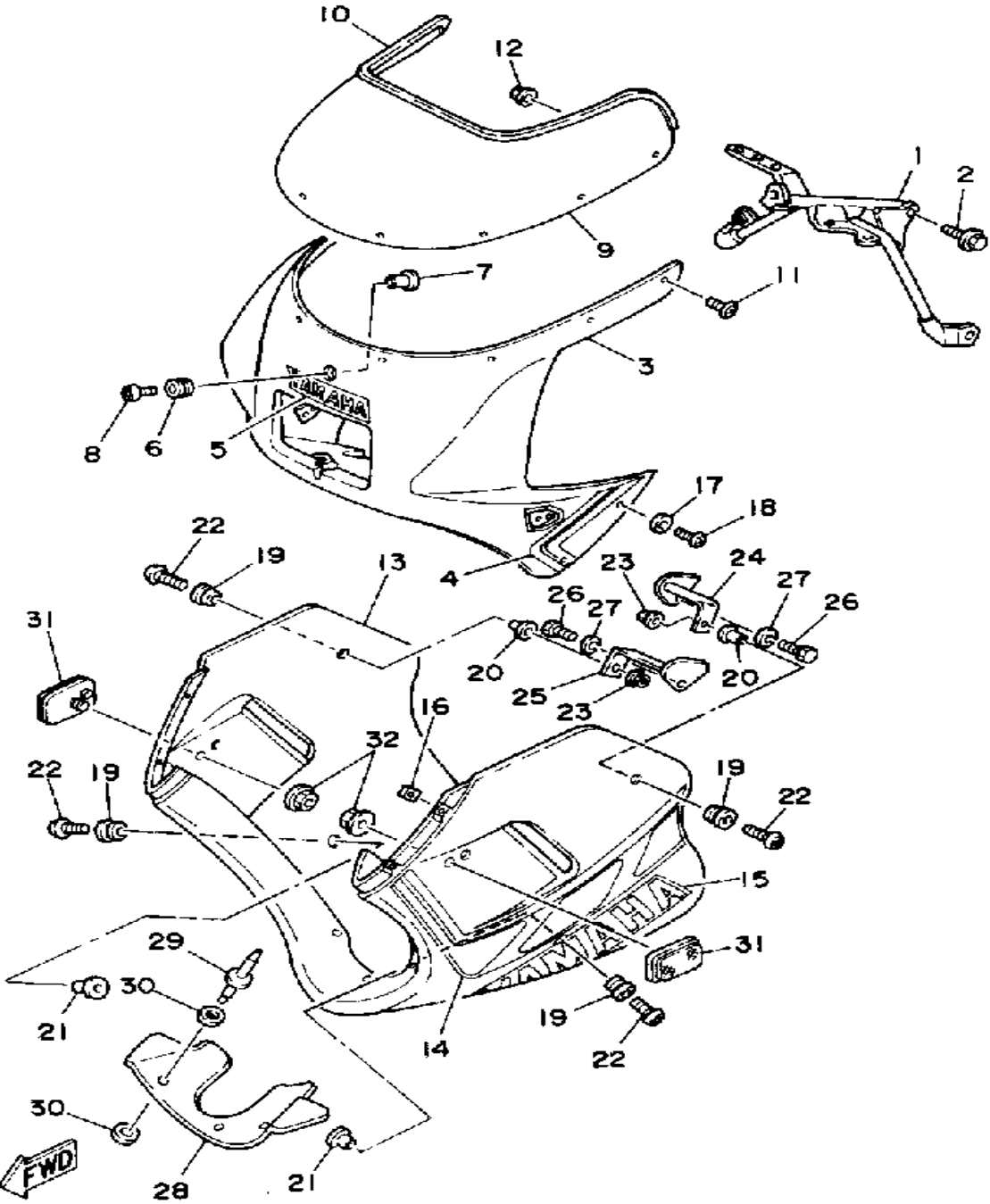


3FDB110-1300

Ref. No.	Part Number	Description	Qty	Remarks
1	2RR-28356-00-00	STAY 1	1	
2	95821-08020-00	BOLT, FLANGE (95801-08020)	2	
3	3FD-2835G-00-00	BODY, FRONT UPPER 1	1	
4	2UE-28390-10-00	GRPHC SET, COWLING	1	
5	99231-00020-00	EMBLEM, YAMAHA	1	
6	90480-13398-00	GROMMET	1	
7	90387-065J6-00	COLLAR	1	
8	90110-06083-00	BOLT, HEX SKT HEADHEXAGON SOCKET HEAD	1	
9	2RR-2837U-00-00	SCREEN	1	
10	2AL-28346-00-00	MOLD 2	1	
11	90150-05020-00	SCREW, ROUND HEAD	8	
12	95706-05500-00	NUT, FLANGE	8	
13	2RR-2835J-30-00	BODY, FRONT LOWER 1	1	
14	2UE-28301-10-00	GRAHIC SET, LWR CVRLOWER COVER 1	1	
15	99231-00060-00	EMBLEM, YAMAHA	2	
16	90183-05024-00	NUT, SPRING	4	
17	90202-06007-00	WASHER, PLATE	4	
18	90154-05059-00	SCREW, BINDING		
19	90480-13398-00	GROMMET	4	
20	90387-067N5-00	COLLAR	2	
21	90387-06241-00	COLLAR	2	
22	90110-06202-00	BOLT, HEXAGON SOCKET HEAD	4	
23	95701-06500-00	NUT, FLANGE	2	
24	2AL-2831E-00-00	STAY, GUIDE 1	1	
25	2AL-2831F-00-00	STAY, GUIDE 2	1	
26	97313-06016-00	BOLT, HEXAGON	2	

CONTINUED ON NEXT FRAME ►

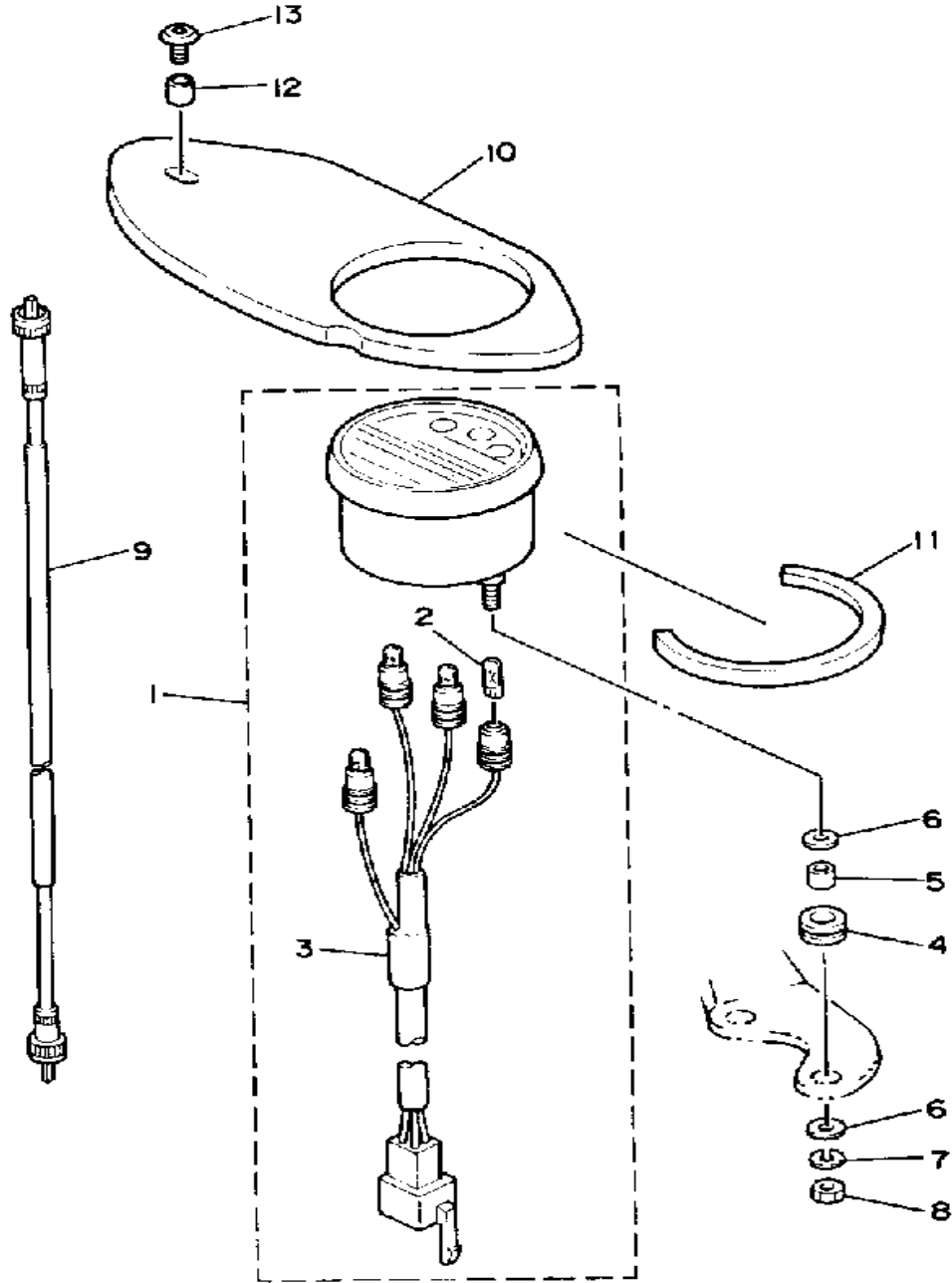
FAIRING - COWLING



Ref. No.	Part Number	Description	Qty	Remarks
27	92995-06100-00	WASHER, SPRING	2	
28	2AL-2836K-00-00	PANEL, INNER 1	1	
29	90267-40029-00	RIVET, BLIND	3	
30	90201-044H9-00	WASHER, PLAIN	6	
31	23V-85110-00-00	REFLECTOR ASSEMBLY	2	
32	95701-05500-00	NUT, FLANGE	2	

3FDB110-1300

METER

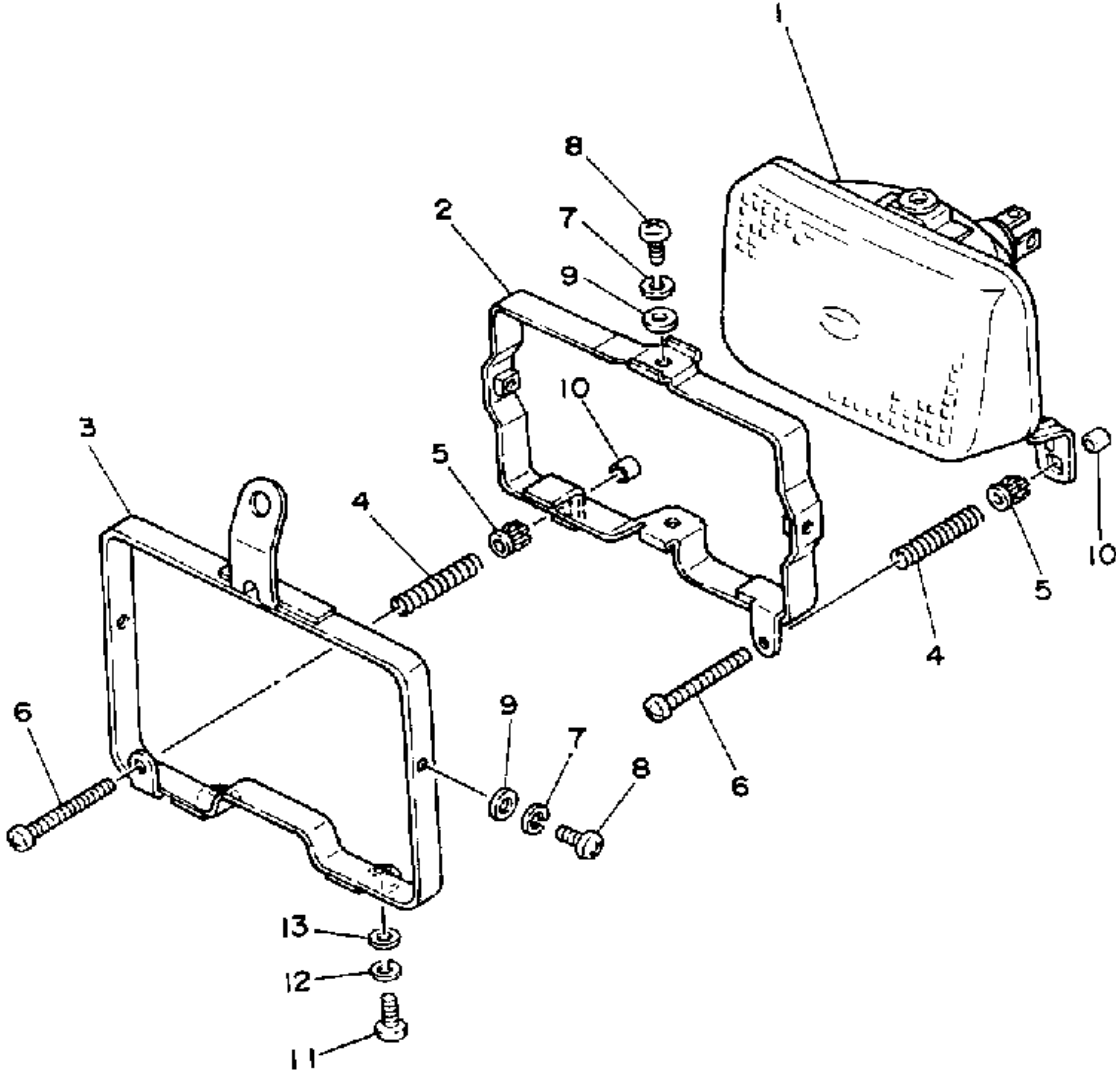


Ref. No.	Part Number	Description	Qty	Remarks
1	2RR-83510-A0-00	SPEEDOMETER ASSEMBLY ..	1	
2	4N0-83516-00-00	. BULB (6V-3W)	4	
3	2RR-83509-00-00	. SOCKET CORD ASSEMBLY .	1	
4	90480-13428-00	GROMMET	2	
5	90387-053H3-00	COLLAR	2	
6	90201-05031-00	WASHER, PLATE	4	
7	92990-05100-00	WASHER, SPRING	2	
8	95380-05600-00	NUT	2	
9	2AL-83550-00-00	SPEEDOMETER CABLE	1	
10	2AL-83611-00-00	PANEL, METER	1	
11	47X-21732-00-00	SEAL 1	1	
12	90387-06241-00	COLLAR	1	
13	90110-06090-00	BOLT, HEX SKT HEADHEXAGON SOCKET HEAD	1	



2RR110-7330

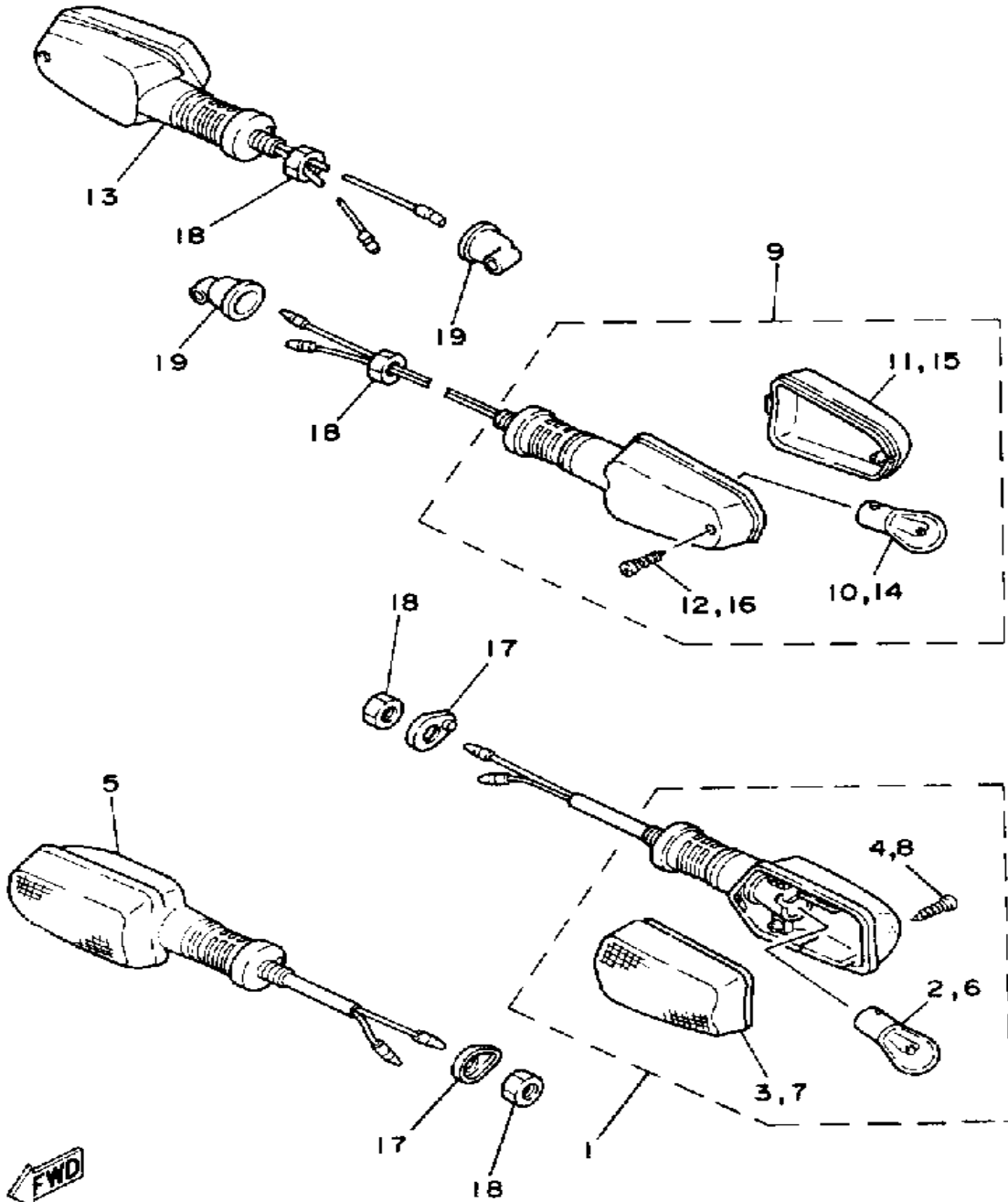
HEADLIGHT



Ref. No.	Part Number	Description	Qty	Remarks
1	2RR-84120-A0-00	LENS ASSEMBLY	1	
2	2RR-84195-00-00	RING, RETAINING	1	
3	2RR-84194-00-00	RING, MOUNTING	1	
4	2EK-84132-00-00	SPRING, SCREW	2	
5	50W-84334-00-00	NUT, ADJUSTING	2	
6	1M1-84524-60-00	SCREW, LENS FITTING	2	
7	92990-05100-00	WASHER, SPRING	4	
8	50W-84333-00-00	SCREW	4	
9	2RR-84138-00-00	WASHER	4	
10	2RR-84178-00-00	CAP	2	
11	98580-05012-00	SCREW, PAN HEAD	2	
12	92990-05100-00	WASHER, SPRING	2	
13	90201-05029-00	WASHER, PLATE	2	

FWD
2RR110-7340

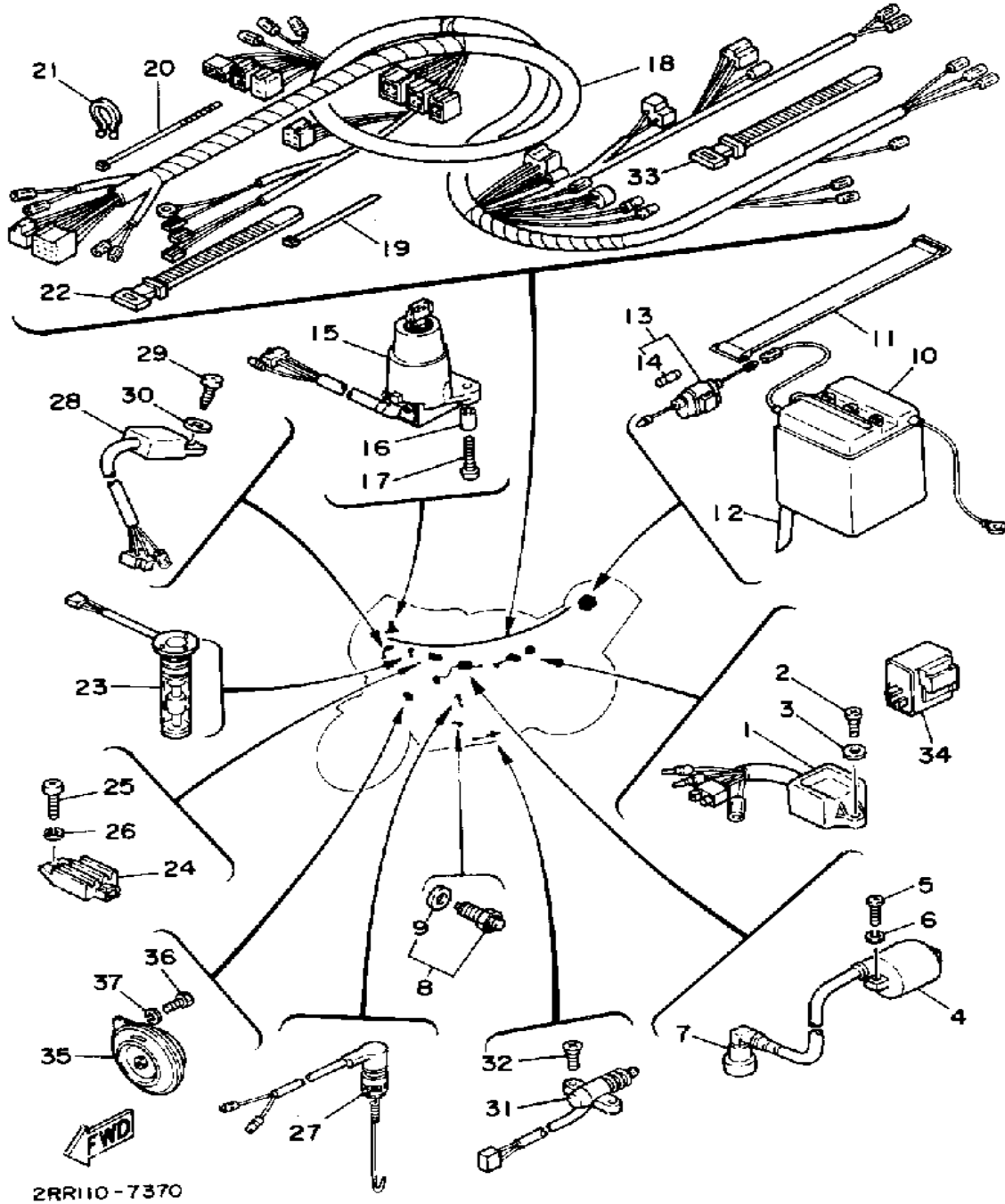
TURNSIGNAL



Ref. No.	Part Number	Description	Qty	Remarks
1	2RR-83340-00-00	R FLSHR LITE ASSEMBLYASSY 2	1	
2	115-83311-60-00	. BULB, FLASHER	1	
3	51L-83332-01-00	. LENS, FLASHER	1	
4	97706-40620-00	. SCREW, TAPPING	1	
5	2RR-83330-00-00	R FLSHR LITE ASSEMBLYASSY 1	1	
6	115-83311-60-00	. BULB, FLASHER	1	
7	51L-83332-01-00	. LENS, FLASHER	1	
8	97706-40620-00	. SCREW, TAPPING	1	
9	2RR-83330-00-00	R FLSHR LITE ASSEMBLYASSY 1	1	
10	115-83311-60-00	. BULB, FLASHER	1	
11	51L-83332-01-00	. LENS, FLASHER	1	
12	97706-40620-00	. SCREW, TAPPING	1	
13	2RR-83340-00-00	R FLSHR LITE ASSEMBLYASSY 2	1	
14	115-83311-60-00	. BULB, FLASHER	1	
15	51L-83332-01-00	. LENS, FLASHER	1	
16	97706-40620-00	. SCREW, TAPPING	1	
17	2RR-83318-00-00	STAY, FLASHER 1	2	
18	95316-12700-00	NUT	4	
19	18G-83365-00-00	CAP	2	

2RR110-7320

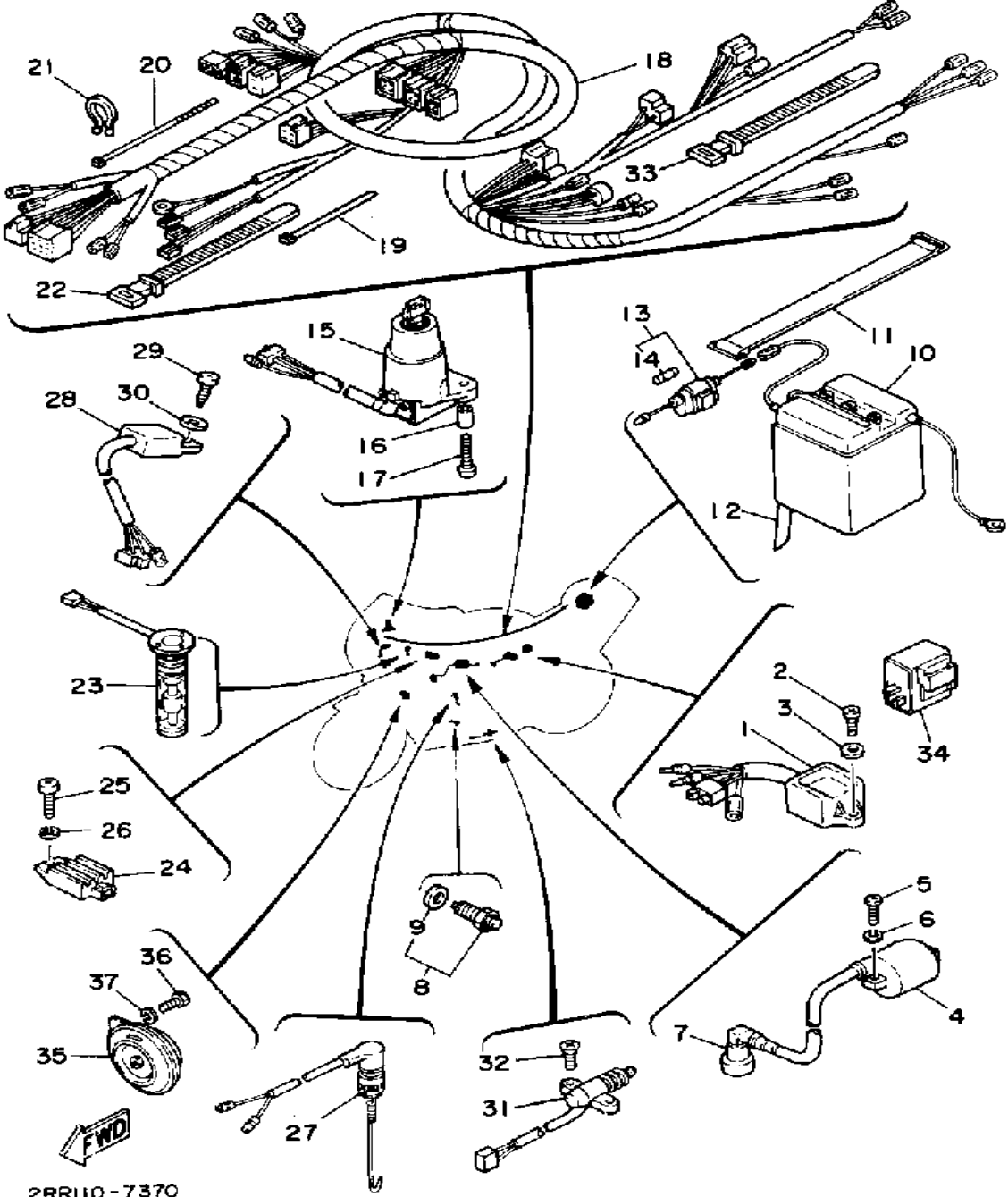
ELECTRICAL 1



Ref. No.	Part Number	Description	Qty	Remarks
1	2GX-85540-M0-00	CDI UNIT ASSEMBLY	1	
2	97702-60120-00	SCREW, TAPPING (97702-60520-00)	1	
3	92990-06200-00	WASHER	1	
4	5M0-82310-M0-00	IGNITION COIL ASSEMBLY ...	1	
5	98580-06020-00	SCREW	2	
6	92995-06100-00	WASHER, SPRING	2	
7	5R2-82370-20-00	PLUG CAP ASSEMBLY	1	W/NOISE SUPP
8	2H7-82540-00-00	NEUTRAL SWITCH ASSEMBLY	1	
9	341-82543-00-00	. GASKET	1	
10	BTG-6N42A-20-00	GS 6N4-2A-2 (6N4-2A-2) (308-82110-10)	1	
11	561-24173-00-00	BAND, TNK FITTING 1	1	
12	90445-080F3-00	HOSE	1	
13	55K-82150-01-00	FUSE HOLDER ASS'Y (55K-82150-00-00)	1	
14	116-82151-00-00	. FUSE (10A)	2	
15	2YK-82501-00-00	MAIN SWCH STRG LCKSTEERING LOCK	1	
16	90387-06553-00	COLLAR	2	
17	90149-06229-00	SCREW	2	
18	2RR-82590-00-00	WIRE HARNESS ASSEMBLY ..	1	
19	90465-13169-00	CALMP	2	
20	437-83936-11-00	BAND, SWITCH CORD	1	
21	90464-16039-00	CLAMP	2	
22	12R-82591-00-00	BAND	2	
23	3J0-85720-00-00	OIL LVL GAUGE ASSEMBLY ..	1	
24	1RH-81960-A0-00	RECTIFIER/REG ASSEMBLYASSY	1	
25	98580-06020-00	SCREW	1	

CONTINUED ON NEXT FRAME ►

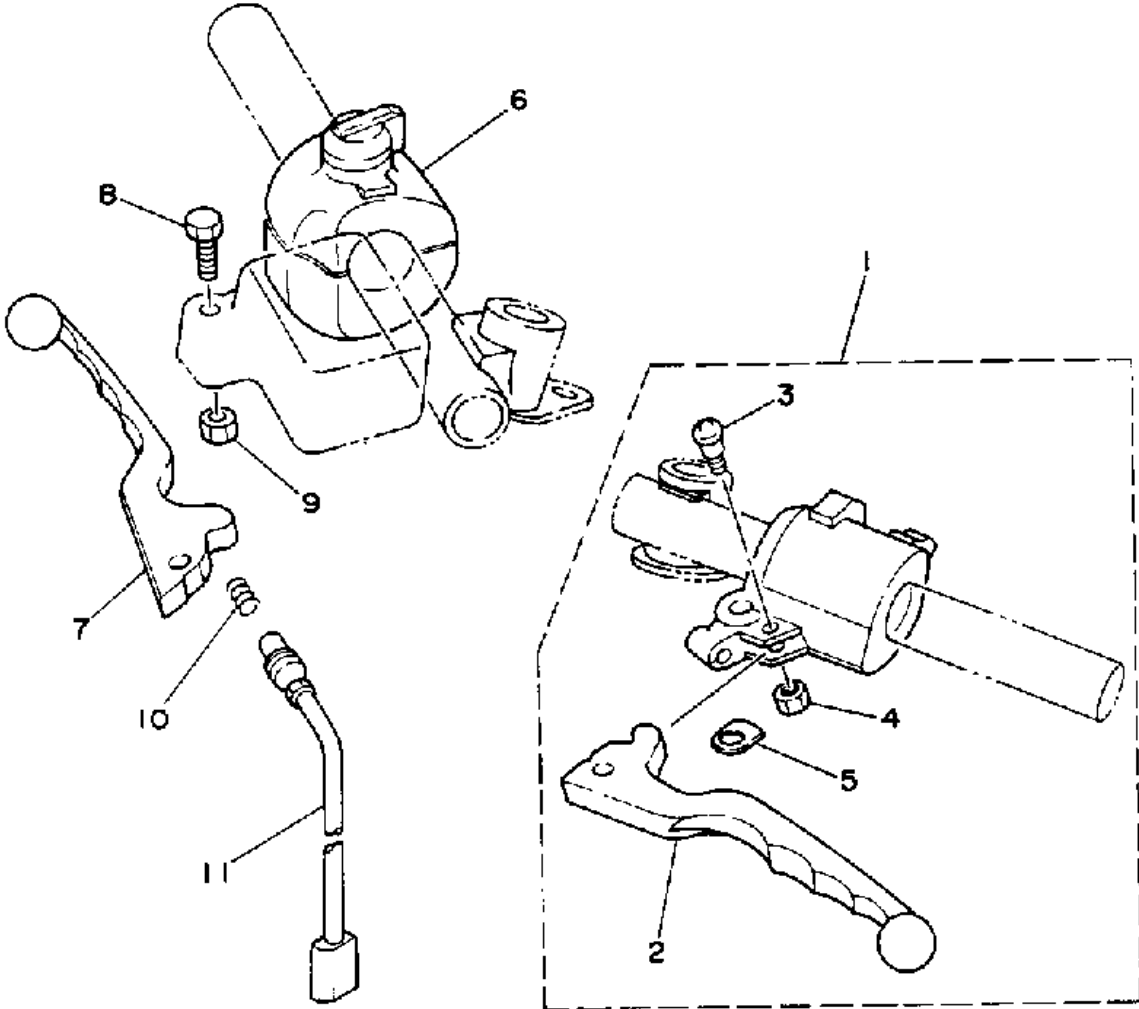
ELECTRICAL 1



Ref. No.	Part Number	Description	Qty	Remarks
26	92995-06100-00	WASHER, SPRING	1	
27	2AL-82530-01-00	STOP SWITCH ASSEMBLY ...	1	
28	4Y3-85590-M0-00	CONTROL UNIT ASSEMBLY ..	1	
29	97702-60120-00	SCREW, TAPPING (97702-60520-00)	1	
30	92990-06200-00	WASHER	1	
31	33E-82566-00-00	SWITCH, SIDE STAND	1	
32	90152-05016-00	SCREW, COUNTERSUNK	2	
33	12R-82591-00-00	BAND	4	
34	20G-83350-60-00	FLASHER RELAY ASSEMBLY .	1	
35	36X-83371-11-00	HORN	1	
36	97013-06012-00	BOLT	1	
37	92995-06100-00	WASHER, SPRING	1	

2RR110-7370

HANDLE SWITCH - LEVER



Ref. No.	Part Number	Description	Qty	Remarks
1	2RR-82910-00-00	LEVER HOLDER ASSEMBLY 1	1	
2	4G3-83912-00-00	. LEVER L	1	
3	90149-05120-00	. SCREW, SPEC'L SHAPE ...	1	
4	95606-05100-00	. NUT, U	1	
5	3M5-83929-00-00	. PLATE, SPRING	1	
6	2RR-83976-00-00	SWITCH, HANDLE 1	1	
7	4U5-83922-10-00	LEVER R	1	
8	90109-06465-00	BOLT	1	
9	95601-06100-00	NUT, U	1	
10	90501-10312-00	SPRING, COMPRESSION	1	
11	34X-83980-01-00	FRONT STOP SWITCH ASSEMBLY	1	



2RR110-7360

YSR50D

1992 SERVICE DATA

MODEL / MODEL CODE	YSR50D / 3FD
INITIAL ENGINE NUMBER / FRAME NUMBER	2RR-058101 / JYA2RRA0()NA058101
ENGINE:	Air-Cooled, Two-Stroke Single
Bore / Stroke / Number Cylinders / Displacement	40mm / 39.2mm / 1 / 49.3cc
Piston Skirt Clearance New / Max	0.030 ~ 0.035mm / 0.1mm
Valve Clearance (Cold): Intake / Exhaust	φ / φ
Oil Type: Above 5°C (40°F)	Yamalube 2* or Equivalent
Oil Type: Below 15°C (60°F)	Yamalube 2* or Equivalent
Capacity: Oil and Filter Change / Oil Change Only	730cc (0.8 qt) (Autotube Tank) / φ
Oil Filter Part Number	φ
TRANSMISSION:	
Oil Type/Capacity/Drive Chain Free Play	SAE 10W30SE / 0.65 Lit (0.7 qt) / 25~30mm
MIDDLE GEAR CASE: Oil Type / Capacity	φ / φ
FINAL GEAR CASE: Oil or Grease Type/Capacity	φ / φ
FUEL TANK: Main / Reserve / Fuel Type	8 Lit (2.1 gal)/1.5 Lit (0.4 gal)/Unleaded Regular
COOLING SYSTEM: Coolant Type / Mixing Ratio (Liquid)	φ / φ
CARBURETOR:	
Manufacturer / Type / ID Number	Mikuni / VM16SH / 2AL-01
Main Jet / Pilot Jet / Pilot Screw (Turns Out)	#120 / #17.5 / 1-1/8
Needle Jet / Jet Needle / Clip Position	E-0 / 3G21 / 4
Slide Cutaway	2.0
Float Height / Fuel Level	22 ±1mm / 0.5 ±0.5mm (With Special Tool)
Idle rpm	1300 ±50
Max CO _e / Max HC _e / Set CO _e	φ / φ / φ
SUSPENSION:	
Front: Oil Type / Level / Quantity	10 wt. Fork Oil* / 145.7mm / 126cc
Gas or Air Pressure Min ~ Max / Standard	φ / φ
Rear: Gas or Air Pressure Min ~ Max / Standard	φ / φ
TIRES: Size / Nominal Pressure: Front	3.50-12 2PR / 1.25kg/cm ² (18 psi)
Size / Nominal Pressure: Rear	4.00-12 2PR / 1.5 kg/cm ² (21 psi)
CHARGING SYSTEM:	Flywheel Magneto, Single Phase, Half Wave
Battery: Model / Specific Gravity / Charge Rate	6N4-2A-2 (6V4AH) / 1.26 / 0.4A
Maximum Output	7.9V 1.0A @ 8000 rpm
Field Coil Color Code / Ω	φ
Stator Coil Color Code / Ω	φ
Charge Coil Color Code / Ω	W ~ B / 0.3Ω ±20%
IGNITION SYSTEM:	Capacitor Discharge
Ignition Timing (BTDC)	22° @ 5,000 rpm
Spark Plug Type	NGK B7HS or B8HS
Spark Plug Gap / Torque / Cap Ω	0.5~0.6mm / 2.5m·kg (18 ft·lb) 5kΩ
Ignition Coil Test Gap / Primary Ω / Secondary Ω	6mm / 0.9Ω ±20% / 7.1KΩ ±20%
Pulser Coil or Pickup Coil Color Code / Ω	W-R ~ B 20Ω ±20%
Source Coil Color Code / Ω	B-R ~ B / 330Ω ±20%
Source Coil Color Code / Ω	B ~ Br / 32Ω ±10%

φ = Does not apply to this model
NA = Information not available

* = Available from YPAD
⊕ = For diagnostic use only

HEADLIGHTS:	
Headlight / Taillight / Turn Signal	6V25-25W / 6V25-5.3W / 6V17W
Lighting Coil Color Code / Ω	Y~R-B / 0.2Ω ±20%
AXLES:	
Front Axle Nut	M10: 4.0m·kg (29 ft·lb)
Front Axle Holder Nut	φ
Rear Axle Nut	M12: 6.0m·kg (43 ft·lb)
Rear Axle Pinch Bolt	φ
Clutch Nut	M12: 4.5m·kg (32 ft·lb)
Drain Plug	M8: 2.0m·kg (14 ft·lb)
Flywheel Nut	M12: 7.0m·kg (50 ft·lb)
Cylinder Head Cover	φ
Cylinder Head	M6: 1.0m·kg (7 ft·lb)
Engine Mounting Bolts: Front Lower	M8: 2.5m·kg (18 ft·lb)
Rear Upper	M8: 2.5m·kg (18 ft·lb)
Front Stay	M10: 4.0m·kg (29 ft·lb)
Rear Stay	M8: 2.5m·kg (18 ft·lb)
Pivot Shaft	M10: 4.0m·kg (29 ft·lb)
Spark Plug	2.5m·kg (18 ft·lb)
OWNERS MANUALS:	
Owner's Manual	LIT-11626-08-01
Service Manual	LIT-11616-06-05 Same as YSR50T, U, W, A, B
Assembly Manual	LIT-11666-06-05 Same as YSR50T, U, W, A, B
Consumer Information	LIT-11656-04-58

φ = Does not apply to this model
NA = Information not available

* = Available from YPAD
⊕ = For diagnostic use only

Lighting	
Headlight / Taillight / Turn Signal	6V25-25W / 6V25-5.3W / 6V17W
Lighting Coil Color Code / Ω	Y~R-B / 0.2 Ω \pm 20%
Fasteners	
Front Axle Nut	M10: 4.0m-kg (29 ft-lb)
Front Axle Holder Nut	ϕ
Rear Axle Nut	M12: 6.0m-kg (43 ft-lb)
Rear Axle Pinch Bolt	ϕ
Clutch Nut	M12: 4.5m-kg (32 ft-lb)
Drain Plug	M8: 2.0m-kg (14 ft-lb)
Flywheel Nut	M12: 7.0m-kg (50 ft-lb)
Cylinder Head Cover	ϕ
Cylinder Head	M6: 1.0m-kg (7 ft-lb)
Engine Mounting Bolts: Front Lower	M8: 2.5m-kg (18 ft-lb)
Rear Upper	M8: 2.5m-kg (18 ft-lb)
Front Stay	M10: 4.0m-kg (29 ft-lb)
Rear Stay	M8: 2.5m-kg (18 ft-lb)
Pivot Shaft	M10: 4.0m-kg (29 ft-lb)
Spark Plug	2.5m-kg (18 ft-lb)
Service Literature	
Owner's Manual	LIT-11626-08-01
Service Manual	LIT-11616-06-05 Same as YSR50T, U, W, A, B
Assembly Manual	LIT-11666-06-05 Same as YSR50T, U, W, A, B
Consumer Information	LIT-11656-04-58

ϕ = Does not apply to this model
NA = Information not available

* = Available from YPAD
 \otimes = For diagnostic use only